

ONE COMPANY. ONE WORLD. ONE SOURCE.™



FlexWORKS

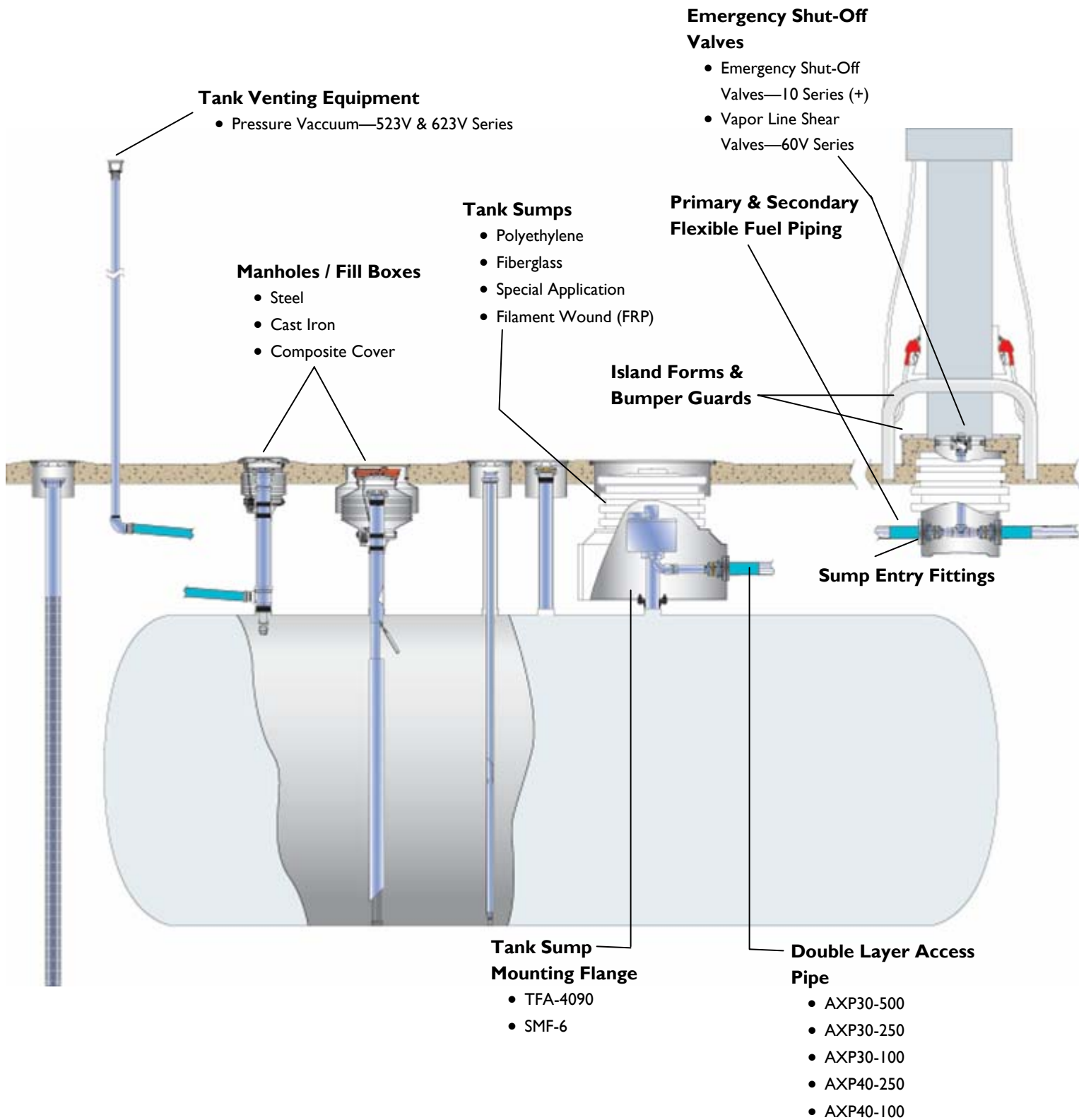
BY OPW FUELING CONTAINMENT SYSTEMS

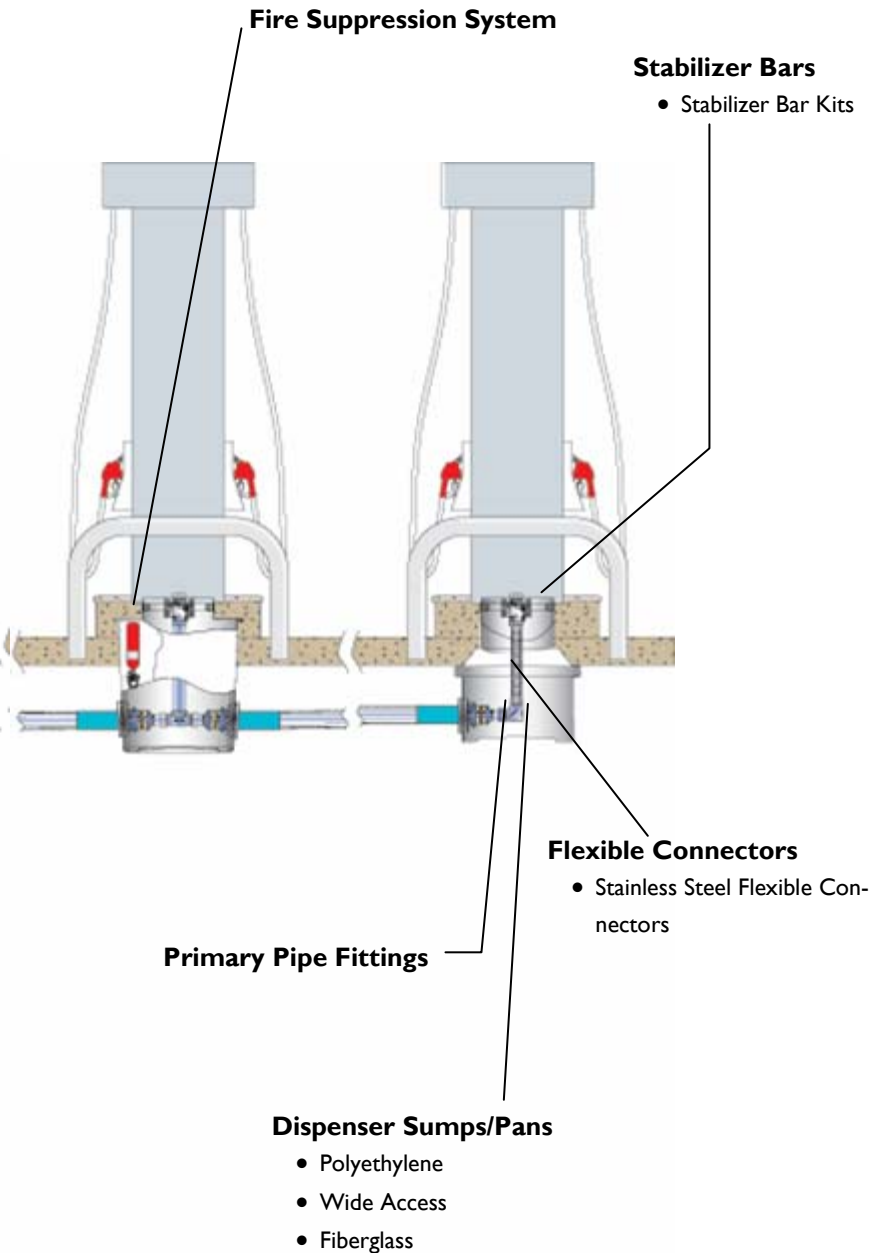
2007 PRODUCT CATALOG



OPW 
FUELING CONTAINMENT SYSTEMS

OPW®





FlexWorks Innovative Fueling Solutions

FlexWorks, by OPW Fueling Containment Systems, the world's leading manufacturer of petroleum handling equipment, is a completely integrated underground fuel transfer and containment system. Designed to provide the highest level of dispensing performance, installation efficiency and containment protection, FlexWorks delivers cost-effective peace of mind for UST operators. The FlexWorks system solution consists of highly engineered components that are designed to operate in unison to ensure long-term system integrity and performance. Additionally, FlexWorks offers a high degree of flexibility to meet virtually any underground piping requirement.

The heart of FlexWorks is an advanced, flexible Piping system that can be installed quickly and easily in a variety of configurations. Flexible piping eliminates the need for buried piping joints, notorious leak points in rigid piping systems. In a pressure system, the submersible pump is connected in series directly to the dispensers with a continuous run of flexible pipe. In a suction system, a continuous run of flexible pipe connects the tank to the suction pump dispenser. All piping connections at the tank and dispensers are contained in sumps.

The primary fuel pipe is available with an integral secondary containment pipe which can be inserted into a lined corrugated access pipe. The crush-resistant access pipe protects the primary pipe from the backfill while serving as an added layer of protection. The access pipe also affords the added advantage of primary pipe retractability. Future inspection, repair or replacement of the primary pipe is achievable without excavation.

The FlexWorks System features highly Integrated components that interconnect seamlessly to provide reliable Secondary Containment. FlexWorks dispenser sumps are custom-made for each particular dispenser footprint. FlexWorks tank sumps afford rain-tight containment for and accessibility to submersible pumps and UST equipment. A variety of FlexWorks entry fitting styles and sizes ensure the availability of a custom-designed solution for virtually every piping application.

FlexWorks by OPW Fueling Containment Systems, the complete Environmental System for underground fuel transfer and containment for the 21st century.

Important

IMPORTANT: OPW Fueling Containment System products and FlexWorks by OPW Fueling Containment System products must be used in compliance with applicable federal, state, provincial, and local laws and regulations. Product selection should be based on physical specifications and limitations and compatibility with the environment and material to be handled. OPW/FLEXWORKS BY OPW FUELING CONTAINMENT SYSTEMS MAKES NO WARRANTY OF FITNESS FOR A PARTICULAR USE. All illustrations and specifications in this literature are based on the latest production information available at the time of publication. Prices, materials, and specifications are subject to change at any time, and models may be discontinued at any time in either case, without notice or obligation. For complete OPW Fueling Containment System warranty information, visit our web site at www.opwfcs.com.

Welcome to OPW Fueling Containment Systems!
OPW Fueling Containment Systems is located in Smithfield, North Carolina. We proudly manufacture our complete line of FlexWorks products in our 195,000 square foot facility.

FlexWORKS

BY OPW FUELING CONTAINMENT SYSTEMS

Innovative Fueling Solutions



Table of Contents

Section	Product	Page	Section	Product	Page
1	Flexible Piping	1	8	Flexible Entry Boots	22
2	Primary Pipe Fittings	5	9	Test Boots and Test Equipment	24
3	Tank Sumps	9	10	Specialty Fittings	25
4	Tank Sump Accessories	14	11	Transition and Special Application Sumps	26
5	Dispenser Sumps	15	12	Installation Tools	29
6	Dispenser Sump Selection Chart	19	13	Fire Suppression	32
7	Dispenser Sump Accessories	21	14	Product Warranty	33

Important

IMPORTANT: OPW/FlexWorks by OPW Fueling Containment System products must be used in compliance with applicable federal, state, provincial, and local laws and regulations. Product selection should be based on physical specifications and limitations and compatibility with the environment and material to be handled. OPW/FLEXWORKS BY OPW FUELING CONTAINMENT SYSTEMS MAKES NO WARRANTY OF FITNESS FOR A PARTICULAR USE. All illustrations and specifications in this literature are based on the latest production information available at the time of publication. Prices, materials, and specifications are subject to change at any time, and models may be discontinued at any time in either case, without notice or obligation.

Flexible Piping

Section I

FlexWorks Flexible Supply Piping

OPW Fueling Containment Systems FlexWorks flexible piping utilizes fully bonded, premium PVDF construction throughout to offer complete peace-of-mind protection, performance, installation ease and advantages over rigid and semi-rigid pipe.

Features and Benefits - Why FlexWorks Flexible Piping?

Lower Installation Costs

- Eliminates the hassles, installation time and potential leak points of rigid pipe installations.
- Easy installation results in less installation time
- Eliminates burdensome cutting, fitting, and cleaning
- No adhesives, heat assists, curing problems or electrofusion welding of joints
- Easy to bend - no special fittings to install in order to make bends

Eliminates potential underground leak points

- No underground fittings or joints
- No hand-built field joints
- All termination points are contained in sumps
- Termination joints precision swaged to simulate factory-made assemblies

Optimized Performance

- Retractable - insert and remove primary pipe at sump entries without breaking concrete or tearing up site when used with FlexWorks access pipe.
- No friction loss from 90, 45, tees associated with rigid piping

Double Wall Flexible Piping: UL 971 Listed, Integral Primary/Secondary, Normal Vent & Vapor Piping, Gasoline, Aviation & Marina Fuels

A UL listed double wall flexible supply piping system designed for installation within Access piping. The outer containment pipe includes inner stand-off ribs to create a small interstitial space which allows for optimum fluid migration, continuous monitoring and easy periodic testing. This piping features an enhanced construction that meets the new UL971 standard. OPW FCS's FlexWorks double wall piping has both the primary and secondary containment pipe UL listed and is labeled as follows: INTEGRAL PRIMARY / SECONDARY FOR MOTOR VEHICLE FUELS.

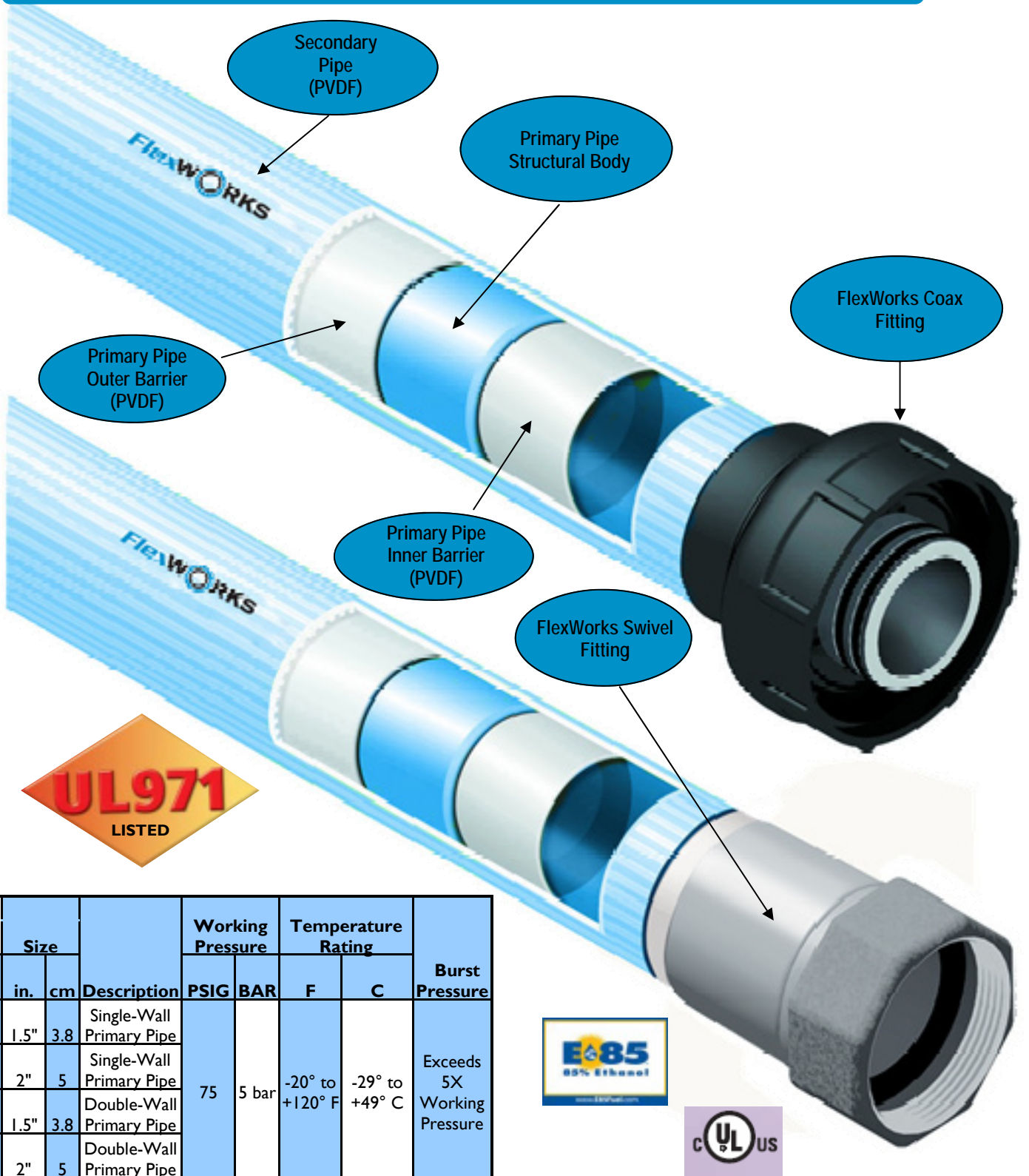
FlexWorks Double Wall Flexible Primary Pipe Ordering Specifications *

Part #	Application	Min. Bend Radius		Packaging		Dimensions			
		in	mm			I.D.		O.D.	
						in	mm	In	mm
C075-250	Double Wall Primary Pipe, ¾"	18	457	Box	250 ft	.75	19	1.18	29
C075-1000	Double Wall Primary Pipe, ¾"	18	457	Reel	1000 ft	.75	19	1.18	29
C10-250	Double Wall Primary Pipe, 1"	18	457	Box	250 ft	1.0	25	1.50	38
C10-1000	Double Wall Primary Pipe, 1"	18	457	Reel	1000 ft	1.0	25	1.50	38
C15-250	Double Wall Primary Pipe, 1.5"	24	610	Box	250 ft	1.5	38	2.00	51
C15-500	Double Wall Primary Pipe, 1.5"	24	610	Reel	500 ft	1.5	38	2.00	51
C15-1000	Double Wall Primary Pipe, 1.5"	24	610	Reel	1000 ft	1.5	38	2.00	51
C20-250	Double Wall Primary Pipe, 2"	36	914	Box	250 ft	2.0	51	2.50	63.5
C20-500	Double Wall Primary Pipe, 2"	36	914	Reel	500 ft	2.0	51	2.50	63.5
C30-200	Double Wall Primary Pipe, 3"	72	1828	Reel	200 ft	3.0	76	3.50	88

* OPW Fueling Containment Systems also offers short or custom lengths of pipe. Please contact our Customer Service department at 1-800-422-2525, or visit us on the web at www.opwfcs.com for the most up to date information.

Section I

Flexible Piping



Product #	Size		Description	Working Pressure		Temperature Rating		Burst Pressure
	in.	cm		PSIG	BAR	F	C	
S15	1.5"	3.8	Single-Wall Primary Pipe	75	5 bar	-20° to +120° F	-29° to +49° C	Exceeds 5X Working Pressure
S20	2"	5	Single-Wall Primary Pipe					
C15	1.5"	3.8	Double-Wall Primary Pipe					
C20	2"	5	Double-Wall Primary Pipe					

Flexible Piping

Section I

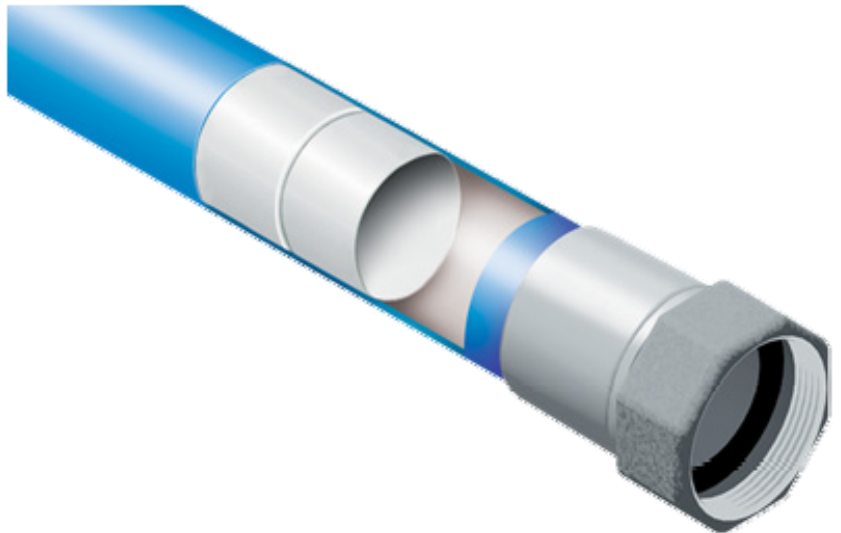
Single Wall Flexible Supply Piping

UL 971 Listed, Integral Primary, Normal Vent & Vapor Piping, Gasoline, Aviation & Marina Fuels

Features and Benefits

Lower Installation Costs

- Eliminates the hassles, installation time and potential leak points of rigid pipe installations.
- Easy installation results in less installation time
- Eliminates burdensome cutting, fitting, and cleaning
- No adhesives, heat assists, curing problems or electrofusion welding of joints
- Easy to bend - no special fittings to install in order to make bends



Eliminates potential underground leak points

- No underground fittings or joints
- No hand-built field joints
- All termination points are contained in sumps
- Termination joints precision swaged to simulate factory-made assemblies

Optimized Performance

- Retractable - insert and remove primary pipe at sump entries without breaking concrete or tearing up site when used with FlexWorks access pipe.

FlexWorks Single Wall Flexible Primary Pipe Ordering Specifications *

Part #	Application	Min. Bend Radius		Packaging		Dimensions			
		in	mm			I.D	O.D.	in	mm
S15-250	Single Wall Primary Pipe, 1.5"	24	610	Box	250 ft	1.5	38	1.8	45
S15-1000	Single Wall Primary Pipe, 1.5"	24	610	Reel	1000 ft	1.5	38	1.8	45
S20-250	Single Wall Primary Pipe, 2"	36	914	Box	250 ft	2.0	50	2.3	58
S20-750	Single Wall Primary Pipe, 2"	36	914	Reel	750 ft	2.0	50	2.3	58
S30-250	Single Wall Primary Pipe, 3"	72	1828	Reel	250 ft	3.0	76	3.3	83

* OPW Fueling Containment Systems also offers short or custom length of pipe. Please contact our Customer Service department at 1-800-422-2525, or visit us on the web at www.opwfcs.com for the most up to date information.

NOTE: Per the Energy Act of 2005, consult your local regulatory agency before installing single wall piping within the U.S.

Section I

Flexible Piping

FlexWorks Lined Access Pipe

A 3” or 4” diameter corrugated flexible conduit used to provide access to and permit the future replacement of the Flex piping if desired. This corrugated pipe is strong enough to withstand H-20 loading requirements when properly buried and thick enough to minimize damage from shipping and jobsite handling. Access Pipe can accommodate the 3/4”, 1”, 1-1/2”, 2” and 3” Flex supply pipe.



Features and Benefits

- Crush and puncture-resistant
- Semi-smooth Liner facilitates ease of installation
- Saves you time and money
- No buried joints

FlexWorks Double Layer Access Pipe Ordering Specifications

Part #	Application	Min. Bend Radius		Packaging		Dimensions			
		in	mm			I.D.		O.D.	
						in	mm	In	mm
AXP30-500	3” Double Layer Access Pipe	36	900	Box	500 ft	3	76	3.536	89.8
AXP30-250	3” Double Layer Access Pipe	36	900	Box	250 ft	3	76	3.536	89.8
AXP30-100	3” Double Layer Access Pipe	36	900	Box	100 ft	3	76	4.760	121.0
AXP40-250	4” Double Layer Access Pipe	36	900	Box	250 ft	4	102	4.760	121.0
AXP40-100	4” Double Layer Access Pipe	36	900	Box	100 ft	4	102	4.760	121.0

Important

IMPORTANT: OPW/FlexWorks by OPW Fueling Containment System products must be used in compliance with applicable federal, state, provincial, and local laws and regulations. Product selection should be based on physical specifications and limitations and compatibility with the environment and material to be handled. OPW/FLEXWORKS BY OPW FUELING CONTAINMENT SYSTEMS MAKES NO WARRANTY OF FITNESS FOR A PARTICULAR USE. All illustrations and specifications in this literature are based on the latest production information available at the time of publication. Prices, materials, and specifications are subject to change at any time, and models may be discontinued at any time in either case, without notice or obligation.

Primary Pipe Fittings

Section 2

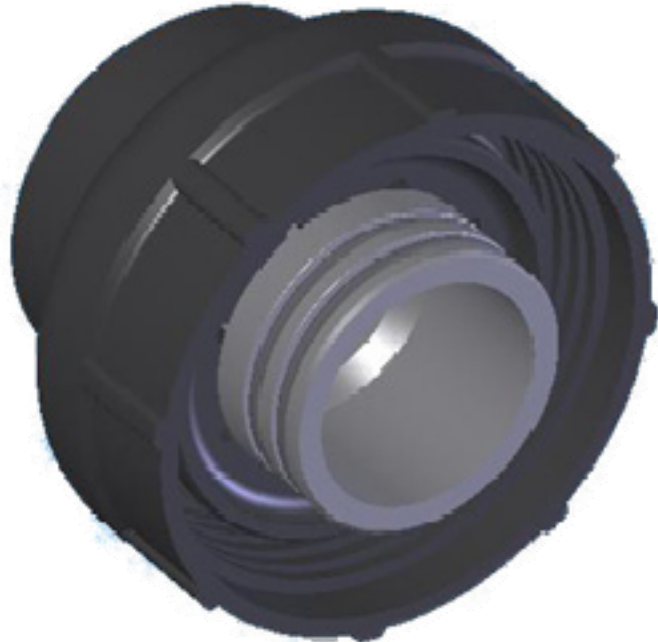
Coaxial System Fittings for Double Wall Primary Pipe (For 1.5" and 2" Only)

A double wall coupling that is used to connect double wall FlexWorks pipe or Marina pipe to coax fittings and adapters. Couplings are attached to the piping using the OPW Fueling Containment Systems Coupling Machine with the coax coupling swage kit.

Features and Benefits

OPW-FCS's unique coax fittings are manufactured from a glass composite thermo-plastic and are UL/ULC Listed for use with doublewall FlexWorks flexible underground piping. Coax fittings also allow the interstitial space of the doublewall FlexWorks flexible piping to pass through the fitting eliminating the need for rubber test boots and connector tubes. Coax fittings can be installed in tank sumps, dispenser sumps or in applications where containment sumps are not used. They permit series, direct, or branch routing configurations of the FlexWorks piping system. All Coax pipe adapters must be contained in a sump.

- UL/ULC listed for use with FlexWorks piping
- Glass composite thermoplastic material
- All fittings are hand tightened
- Allows containment of a steel riser pipe
- Permits series, branch or direct routing
- Triple O-ring seals ensure integrity



Models CPC-1502,
CPC-2002

Easy Installation

Coax Couplings

Coax couplings are installed to the ends of Flex pipe sections. The couplings come pre-assembled and are attached to the pipe by using the Flex coupling machine. There is no need to strip the outer jacket before attaching the coupling. Liquid pressure tightness is ensured with a triple O-ring seal. Two O-rings seal the primary while one O-ring seals the secondary.

Coax Fittings

The coax fittings are used to connect coupled Flex pipe sections. The coax coupling connects to the non-metallic, double wall coax fitting by hand. No tools are required.



Section 2

Primary Pipe Fittings

FlexWorks Coax Coupling and Fitting Ordering Specifications

Part #	Application	Packaging	
CPC-1502	1.5" Coax double wall pipe coupling	EA	
CPC-1502R	1.5" Coax double wall pipe coupling (retro style)		
CPA-1520	1.5" Coax Pipe Adapter, 1-1/2 NPSM TO 2" NPT		
CTF-1515	1.5" Coax tee		
CTF-1515T	1.5" Coax tee w/ test port		
CEF-1515	1.5" Coax elbow		
CEF-1515T	1.5" Coax elbow w/ test port		
CRA-1515	1.5" Coax riser pipe adapter (1.5" NPSM to 1.5" NPT)		
CCC-1515	1.5" Coax connector coupling (connects two 1.5" coax couplings)		
COK-0015	1.5" Coax O-Ring kit		
CRN-0015	1.5" Coax replacement nut		
CPC-2002	2" Coax double wall pipe coupling		EA
CPC-2002R	2" Coax double wall pipe coupling (retro style)		
CPA-2020	2" Coax Pipe Adapter, 2" NPSM TO 2" NPT		
CTF-2020	2" Coax tee		
CTF-2020T	2" Coax tee w/ test port		
CEF-2020	2" Coax elbow		
CEF-2020T	2" Coax elbow w/ test port		
CRA-2015	2" Coax riser pipe adapter (2: NPSM to 1.5" NPT)		
CRA-2020	2" Coax riser pipe adapter		
COK-0020	2" Coax O-Ring kit		
CRN-0020	2" Coax replacement nut		



CCC-1515
Coax Connector Coupling



CTF-1515, CTF-2020
Coax Tee



CPA-1520, CPA-2020
Coax Pipe Adapter

Primary Pipe Fittings

Section 2

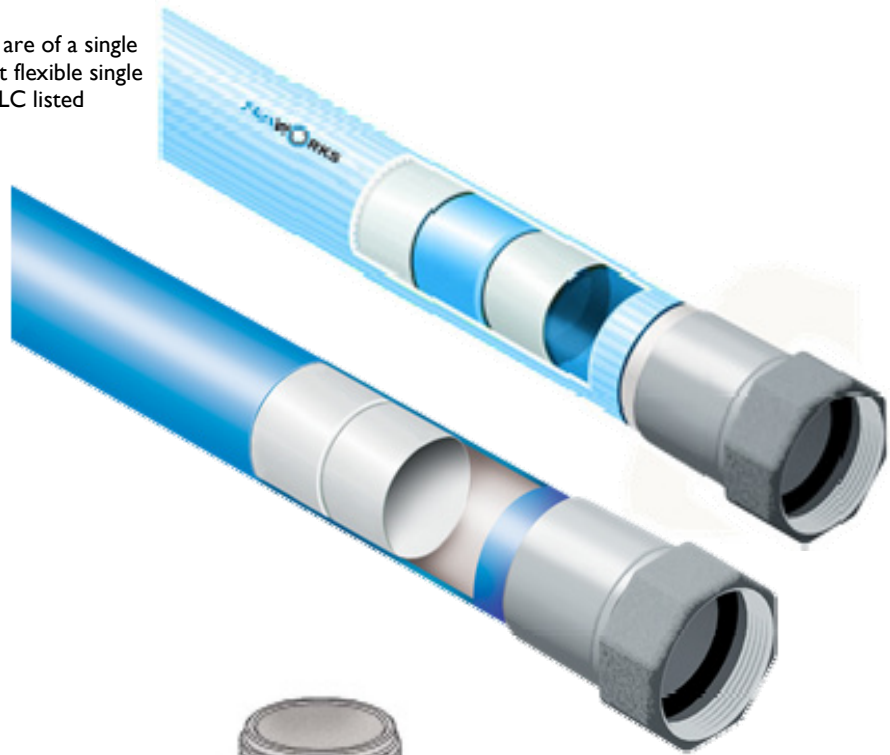
Swivel Couplings and Fittings for Single Wall and Double Wall Primary Pipe

FlexWorks Swivel couplings and fittings are of a single wall design and are used to interconnect flexible single wall or double wall piping. These UL/ ULC listed stainless steel couplings must be contained within containment sumps and not directly buried.

The pipe connection system includes an internally expanded stainless steel coupling attached to the end of a flexible single wall or double wall pipe section. The swivel coupling has a smooth sealing face fitted with a viton ring gasket. The couplings have a swivel nut used to connect the pipe coupling to the swivel fitting. By tightening the swivel nut, the sealing face of the swivel coupling and swivel fitting come together to compress the gasket for a high pressure seal.

Features and Benefits

- UL / ULC listed for use with Flex piping
- Quick, easy to install
- All stainless steel couplings
- Internally expanded couplings
- E-Coated fittings for fuel compatibility



Swivel Adapter (SMA Model)



Swivel Tee Fitting (STF Model)



Swivel Elbow Fitting (SEF Model)

Section 2

Primary Pipe Fittings

FlexWorks Swivel Couplings and Fittings Ordering Specifications

Part #	Application	Packaging	
SPC-0075	3/4" Pipe Coupling, Male NPT	EA	
SFA-7575	3/4" Adapter, 3/4" NPSM to 3/4" male NPT		
SPC-0100	1" Pipe Coupling, Male NPT	EA	
SFA-1010	1" Adapter, 1" NPSM to 1" Male NPT		
SPC-0150	1.5" Swivel coupling, flat gasket	EA	
SGP-0150	1.5" Swivel gasket pack for SC-0150 (6 ea)		
STF-1515	1.5" Tee, 1.5" x 1.5" NPT		
SEF-1515	1.5" Elbow, 1.5" NPT		
SMA-1515	1.5" Adapter, 1.5" NPSM to 1.5" NPSM		
SCC-1515	1.5" Connector, 1.5" NPSM to 1.5" NPSM		
SMA-1520	1.5" Adapter, 1.5" NPSM to 2" Male NPT		
SPC-0200	2" Swivel Coupling, flat gasket		EA
SGP-0200	2" Swivel gasket pack for SC-0200 (6 ea)		
STF-2020	2" Tee, 2"x2"x2" NPT		
SEF-2020	2" Elbow, 2" NPT		
SRE-2015	2" Elbow reducer, 2" x 1.5" NPT		
SMA-2015	2" Adapter, 2" NPSM to 1.5" NPT		
STF-2215	2" tee, 2" x 2" x 1.5" NPT		
SMA-2020	2" Adapter, 2" NPSM to 2" Male NPT		
SCC-2020	2" Connector, 2" NPSM to 2" NPSM		
SCC-2015	2" Reducer, 2" NPSM to 1.5" NPSM		
SRT-2151	2" Tee reducer, 2" x 1.5" x 1.5" NPT	EA	
SPC-0300	3" Swivel Coupling, flat gasket		
SGP-0300	3" Swivel gasket pack for SC-0300 (6 ea)		
STF-3030	3" Tee, 3" X 3" X 3" NPT		
SEF-3030	3" Elbow, 3" NPT		
SMA-3030	3" Adapter, 3" NPSM to 3" NPT		
SCC-3030	3" Connector, 3" NPSM to 3" NPSM		

Important

IMPORTANT: OPW/FlexWorks by OPW Fueling Containment System products must be used in compliance with applicable federal, state, provincial, and local laws and regulations. Product selection should be based on physical specifications and limitations and compatibility with the environment and material to be handled. OPW/FLEXWORKS BY OPW FUELING CONTAINMENT SYSTEMS MAKES NO WARRANTY OF FITNESS FOR A PARTICULAR USE. All illustrations and specifications in this literature are based on the latest production information available at the time of publication. Prices, materials, and specifications are subject to change at any time, and models may be discontinued at any time in either case, without notice or obligation.

Tank Sumps

Section 3

OPW Fueling Containment Systems offers a variety of tank sump models made from both polyethylene and fiberglass.

OPW Fueling Containment System tank sumps function as a liquid tight isolation container providing secondary containment for the tanks fittings, valves, pumps and Flex-Works pipe fittings.

They also provide surface access to the tank itself, as well as a clean, dry environment for future services and maintenance. All tank sump models have height adjustable risers to accommodate different tank burial depths. Each sump model has its own specific range of height adjustability, and are fabricated and assembled at the job site.



Fiberglass Tank Sump with Mechanically Fastened Covers (Injection Molding)



Polyethylene Tank Sump with Compression Fit Cover



Polyethylene Tank Sump with Mechanically Fastened Cover



Fiberglass Tank Sump with Mechanically Fastened Cover (Filament Wound)



Fiberglass Tank Sump with Compression Fit Cover (Filament Wound)

Section 3

Tank Sumps

Polyethylene Tank Sumps with Compression Fit Covers

OPW-FCS one piece polyethylene tank sumps are listed with Underwriters Laboratories, Inc., (UL), and have passed the requirements for Canada at Underwriters Laboratories of Canada (ULC), KIWA and IP.

Features and Benefits

- Liquid tight covers
- Liquid tight riser/base joints
- Chemically compatible
- Structurally strong
- Height adjustable
- Liquid tight pipe entries
- Liquid tight tank connections

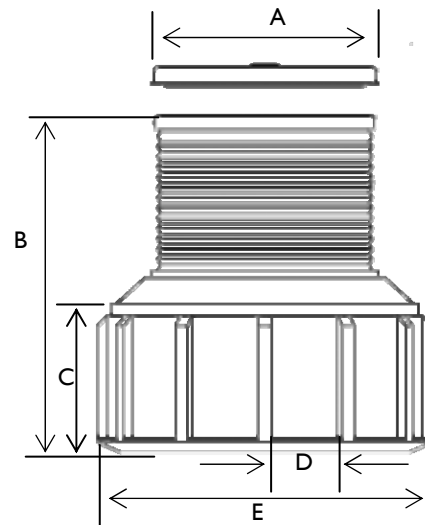


Shallow Burial Sumps

A one piece polyethylene containment sump designed for shallow tank burial depths between 21” and 37”. Available in sizes to install under 36” and 42” diameter street manholes. (SBS-3642H)

Medium Burial Sumps

A one piece polyethylene containment sump designed for standard tank burial depths between 24” and 44”. Available in sizes to install under 36” and 42” diameter street manholes. (MBS-3645H)



Polyethylene Tank Sumps Ordering Specifications (with Compression Fit Covers)

Replacement Parts & Accessories	
SCS-0036	Sump Cover Seal
TSC-0036	Tank Sump Cover

Part #	Application	Manway Diameter		Dimensions						Panels #	E Base		Sump Base Burial Depth			
		in	mm	A Cover		B Height		Cx D Panel			in	mm	max.		min.	
				in	mm	in	mm	in	mm		in	mm	in	mm	in	mm
SBS-3642H	Tank Sump Shallow Bury, 36"x42"	36	914	33	838	32	812	12.5x8	317x203	12	42	1,067	37	940	21	533
MBS-3645H	Tank Sump Medium Bury, 36"x45"	36	914	33	838	39	990	16x9	406x229	12	45	1,143	44	1,118	24	610
CHK-1000	Cover Hold Down Kit															

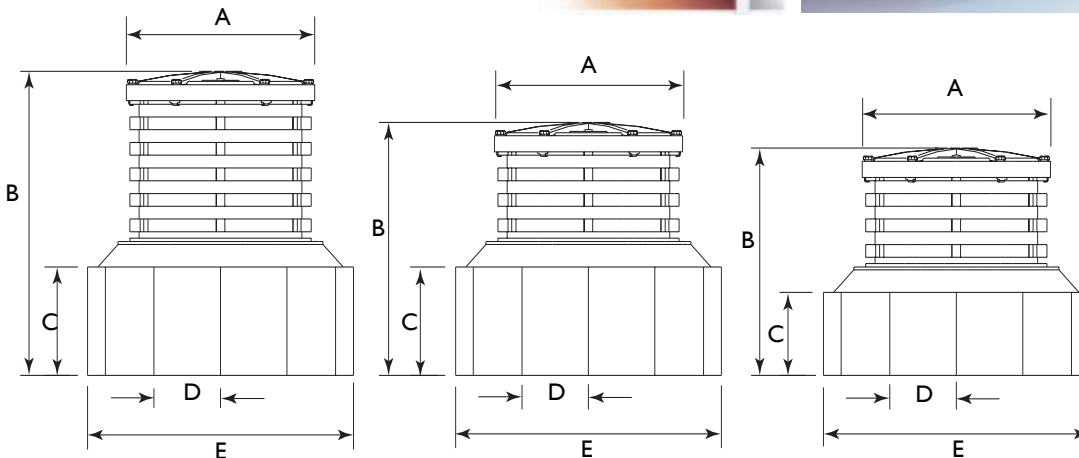
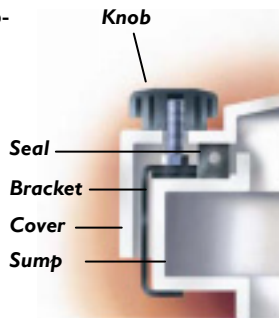
Tank Sumps

Section 3

Polyethylene Tank Sumps with Mechanically Fastened Covers

Features and Benefits

- *Long-Term Watertight Performance/Strength & Rigidity* - one piece design provides reliable watertight integrity and long product life. Designed to resist deformation under burial and high water table forces.
- *Installation Flexibility*- multiple flats provide maximum area for locating pipe entries.
- *Easy Field Height Adjustability*- the special ribbed height adjustment design makes adjustments to finished grade, if necessary, quick and easy.



Replacement Parts & Accessories	
Part Number	Description
HI3257M	Knob
HI3213M	Bracket
HI3214M	Seal 33" (838 mm)
HI3215M	Seal 39" (991 mm)
C04420M	Ring 33" (838 mm)
C04432M	Ring 39" (991 mm)
D02025M	Cover 33" (838 mm)
C02034M	Cover 39" (991 mm)

Polyethylene Tank Sumps Ordering Specifications (with Mechanically Fastened Covers)

Part #	Application	Manway Diameter		Dimensions						Panels #	E Base		Sump Base Burial Depth			
		in	mm	A Cover		B Height		Cx D Panel			in	mm	max.		min.	
				in	mm	in	mm	in	mm		in	mm	in	mm	in	mm
TSS-4536	Tank Sump Shallow Bury, 36"x45"	36	914	33	838	34	864	12x12	305x305	12	45	1,143	39	991	28	711
TSM-4536	Tank Sump Medium Bury, 36"x45"	36	914	33	838	39	991	17x12	432x305	12	45	1,143	44	1,118	33	838
TSD-4842	Tank Sump Deep Bury, 42"x48"	42	1,067	39	991	51	1,295	17x11	432x279	14	48	1,219	56	1,422	33	838

Section 3

Tank Sumps

Fiberglass Two-Piece Tank Sumps and Resin Kits

Injection Molded Fiberglass (FRP) Tank Sumps

Features and Benefits

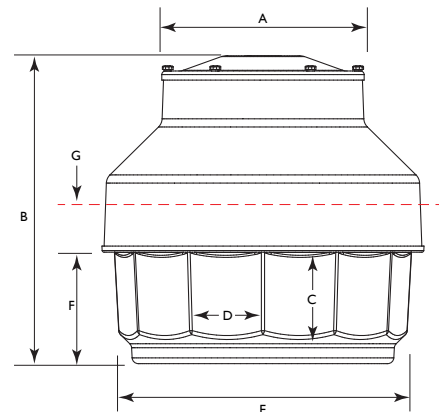
- *Structural Integrity* - engineered with thick walls and a structurally efficient geometry to withstand backfill and high water table forces. Precise glass/resin metering throughout the molding process ensures material consistency and maximizes the strength-to-weight ratio.
- *Smooth/Flat Sealing Surfaces for Leak - Tight Sump Entry Fittings* - male/female mold halves produce a uniform wall thickness while eliminating air entrapment. The result is a flat, smooth finish, both inside and out, which changes the integrity of the pipe entries.
- *Full Access Working Area* - two-piece design allows full access until top is attached after plumbing is complete
- *Flexibility in Mounting* - sump can be mounted directly to a 42" FRP containment collar or with OPW FCS Sump Mounting Flanges.



Middle Joint



Collar Mounted



Replacement Parts & Accessories	
Part Number	Description
H13257M	Knob
D02238	Cover
H13214M	Seal
D02229	Sump Top Assembly
E00779	Sump Bottom Assembly

Fiberglass Two-Piece Tank Sumps & Resin Kit Ordering Specifications

Part #	Application	Dimensions												Sump Base Burial Depth			
		A Cover		B Height		Cx D Panel		E Base		F Bottom Sump		G Max. Cutoff					
		in	mm	in	mm	in	mm	in	mm	in	mm	in	mm	in	mm	in	mm
TSMF-4536	Fiberglass Two Piece medium bury tank sump, 36"x45"	33	838	39	991	14x12	356x305	45	1,143	19	483	8.5	216	44	1,118	26	660
TSDf-4536	Fiberglass Two Piece deep bury tank sump, 36"x45"	33	838	50	1,270	14x12	356x305	45	1,143	19	483	10.5	267	55	1,397	39	991
RK-5000	Fiberglass Resin Kit (Qt. size) – One Kit Required to Join Sump Base to Sump Top; one kit required to join sump base to 42" FRP Tank Containment Collar.																

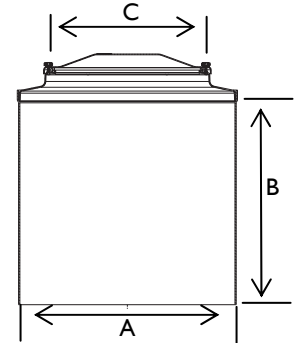
Tank Sumps

Section 3

Fiberglass Filament Wound Tank Sumps with Mechanically Fastened Covers

Features and Benefits

- *Filament Wound* - offers a consistent wall thickness that provides superior structural integrity and impact resistance.
- *Smooth Sealing Surface* - uniform wall thickness and smooth finish, both inside and out, provide for reliable sealing areas.
- *Full Access Working Area* - two-piece design allows full access to sump interior for installation of entry fittings and piping. Once installation of all piping is complete, the top is attached to the base.



Filament Wound Tank Sumps Ordering Specifications (with Mechanically Fastened Covers)

Model	Description	Dimensions						Weight		Surface Area	
		A		B Height		C Cover		lbs.	kg	sq. ft.	sq. mtr
		in.	mm	in.	mm	in.	mm				
TRFS-4248	42" x 48" Deep Bury Tank Sump	42	1,067	55	1,397	33	838	126	57	55.24	5.13
TRFS-4260	42" x 60" Deep Bury Tank Sump	42	1,067	67	1,702	33	838	152	69	66.27	6.16

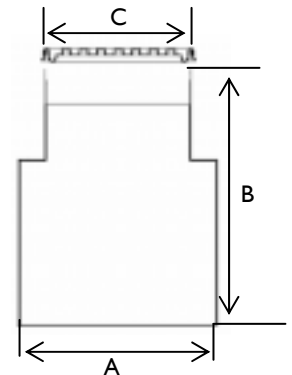
Replacement Parts & Accessories	
Part Number	Description
H13257M	Knob
D02238	Cover
H13214M	Seal
D02229	Sump Top Assembly
E00779	Sump Bottom Assembly



Fiberglass Filament Wound Tank Sumps with Compression Covers

Features and Benefits

- *Complete* - One piece containment sump designed with a collar-mount base to mount to a 42" tank collar. Comes with a polyethylene water-resistant cover with cover gasket and handle.
- *Smooth Sealing Surface* - uniform wall thickness and smooth finish, both inside and out, provide for reliable sealing areas for leak-tight pipe entries
- *Full Access Working Area* - design allows full access to sump interior for installation of entry fittings and piping. Once installation of all piping is complete, the top is attached to the base.



Fiberglass Tank Sumps Ordering Specifications (with Compression Covers)

Model	Description	Dimensions					
		A		B Height		C Cover	
		in.	mm	in.	mm	in.	mm
DBS-3642F	36"x42" Deep Bury Tank Sump	42	1,067	67	1,702	33	838
DBS-4242F	42"x42" Deep Bury Tank Sump	42	1,067	48	1,219	37	939
FRK-2000	Fiberglass Resin Kit						

Replacement Parts & Accessories	
Part Number	Description
SCS-0036	Sump Cover Seal
TSC-0036	Tank Sump Cover
SCS-0042	Sump Cover Seal
TSC-0042	Tank Sump Cover

Section 4

Tank Sump Accessories

Tank Sump Mounting Flanges

FlexWorks Tank Sump mounting flanges are used to mount FlexWorks tank sumps to 4" and 6" underground storage tank bung fittings. Flange top models (SMF-0600) provide added flexibility in positioning of pump or extractor outlets. First, the riser or extractor is threaded into the top flange. The top flange is then oriented and bolted to the mounting flange.

Our no-bolt style mounting flange, model TFA-4090, is also used to mount FlexWorks tank sumps to 4" and 6" underground storage tank bung fittings and attaches to the bottom of the sump base to provide a secure and liquid tight connection. This model has compression studs for added stability and fast and easy installation with a socket wrench.

Tank Sump Mounting Flange Ordering Specifications

Part #	Application
TFA-4090	4" Tank Fitting Adapter, No Bolt Style
SMF-0600	6" Tank Fitting Adapter, Bolt Style
SMF-0400	4" Tank Fitting Adapter, Bolt Style

Tank Manway Adapters

FlexWorks Tank Manway Adapters are used to mount tank sumps to a tank's outward flanged manway. This adapter attaches to the tank's manway and compresses the fabricated sump base and gasket between the manway and the sump base.

Tank Manway Adapter Ordering Specifications

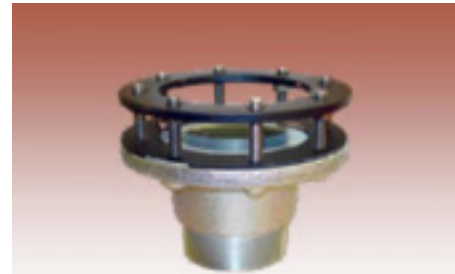
Part #	Application
TMA-2224	Tank Manway Adapter (22 inch)
TMA-2424	Tank Manway Adapter (24 inch)

Sump Inspection Ports

FlexWorks optional sight glass kits include urethane sealant (SL-1100).

Sump Inspection Port Ordering Specifications

Part #	Application
SIP-4	4" Sump Inspection Port



6" Tank Fitting Adapter
(SMF-0600)

4" Tank Fitting Adapter
(SMF-0400)



4" Tank Fitting Adapter—No Bolt Style
(TFA-4090)



Tank Manway Adapter
(TMA-2224) (TMA-2424)



4" Sump Inspection Port
(SIP-4)
Includes Urethane Sealant (SL-1100)

Important

IMPORTANT: OPW/FlexWorks by OPW Fueling Containment System products must be used in compliance with applicable federal, state, provincial, and local laws and regulations. Product selection should be based on physical specifications and limitations and compatibility with the environment and material to be handled. OPW/FLEXWORKS BY OPW FUELING CONTAINMENT SYSTEMS MAKES NO WARRANTY OF FITNESS FOR A PARTICULAR USE. All illustrations and specifications in this literature are based on the latest production information available at the time of publication. Prices, materials, and specifications are subject to change at any time, and models may be discontinued at any time in either case, without notice or obligation.

Dispenser Sumps

Section 5

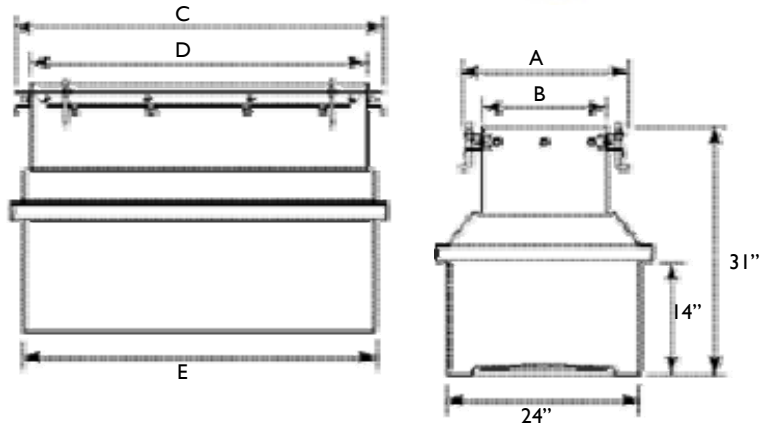
FlexWorks One-Piece Polyethylene Dispenser Sumps

FlexWorks Dispenser Sumps are installed beneath fuel dispensers to provide access to and secondary containment of dispenser plumbing, emergency shear valves, and underground piping connections. Stabilizer Bar Kits are installed in FlexWorks Dispenser Sumps to provide reliable support for boss-mounted emergency shear valves.



Features and Benefits

- **Multiple Models** - Ensure a custom fit
- **Structural Reinforcing on Large MPD Models** - Prevents sump deformation from backfill and high water table forces.
- **Light Color** - Preserves rigidity in sunlight before backfill and provides maximum visibility after installation.
- **Full Perimeter Liquid Collection Channel** - Facilitates quick leak detection and allows flexibility in locating leak sensors.
- **Integral Rain Lip** - Protrudes into the dispenser frame to prevent surface water entry.
- **Easy Installation** - Field height adjustment capability and large pipe entry area ensures installation flexibility.
- **Available in a Conduitless Model** - eliminates conduit entry fittings and prevents a notorious leak point inside dispenser sumps.



One-Piece Polyethylene Dispenser Sumps

Ordering Specifications *

Model	A		B		C		D		E		Weight	
	in.	cm	in.	cm	in.	cm	in.	cm	in.	cm	lbs.	kg.
DS-I036	14	36	10	25	40	102	36	91	38	97	65	65
DS-I117F **	14.5	37	10.5	27	20.5	52	16.5	42	18.5	47	32	15
DS-I120	15	38	11	28	24	61	20	51	25	64	33	15
DS-I123	15	38	11	28	27	69	23	58	25	64	33	15
DS-I123F **	15	38	11	28	27	69	23	58	25	64	33	15
DS-I229	15.5	39	11.5	29	33	84	29	74	31	79	49	22
DS-I242	15.5	39	11.5	29	46	117	42	107	44	112	84	38
DS-I543	19	48	15	38	14.5	105	43	109	45	114	84	38
DS-I630	20	51	16	41	34	86	30	76	32	81	52	23
DS-I642	20	51	16	41	46	117	42	107	44	112	84	38
DS-I836	21.5	55	17.5	44	40.5	103	36.5	93	39	99	70	32

* Refer to FlexWorks Dispenser Sump Selection Chart to select sumps for particular dispensers (See pages 19 - 20 of this catalog)

** Flush mount model supplied without rain lip due to dispenser frame clearance limitations; Frame gasket included.

Anchor bolts provided, Stabilizer Bar Kits ordered separately; One kit required for each emergency and vapor shear valve.

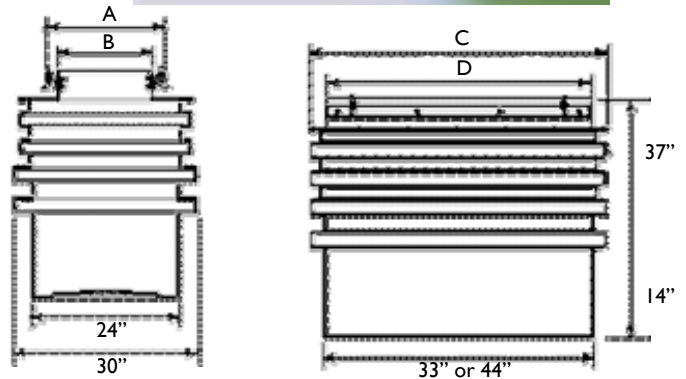
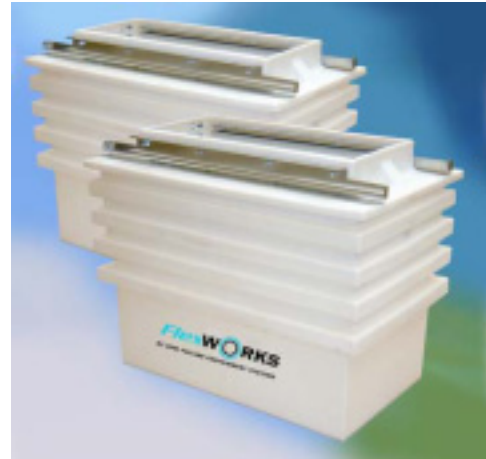
Section 5

Dispenser Sumps

FlexWorks Wide Access Polyethylene Dispenser Sumps

Features and Benefits

- **Contractor-Friendly Installation** – Open top provides unrestricted access to the inside of the containment chamber to facilitate entry fitting and piping installation. Dispenser mounting frame is attached after plumbing is complete.
- **Deeper Burial Capability** – 37" burial depth allows piping slope requirements to be met more easily in layouts with long piping runs.
- **Simple Field Height Adjustment** – The top portion of the chamber can be quickly and easily trimmed along the ribs to ensure maximum installation flexibility.
- **Full Perimeter Liquid Collection Channel** – Facilitates quick leak detection and allows flexibility in locating leak sensors.
- **Convenient Shipping and Storage** – Sump boxes are partially nestable. Two chamber sizes accept multiple frames to accommodate all common dispensers.
- **Polyethylene Top** - Polyethylene Top will not corrode.



Wide Access Polyethylene Dispenser Sumps Ordering Specifications

Sump Model #	Dimensions								Weight with Top		Box Part No.	Top Assembly Part No.
	A		B		C		D		lbs.	kg		
	in.	cm	in.	cm	in.	cm	in.	cm				
DSW-1117F *	14.5	37	10.5	27	37	94	16.5	42	94	43	E00590M	D02209
DSW-1120	15	38	11	28	37	94	20	51	94	43	E00590M	D02210
DSW-1123	15	38	11	28	37	94	23	58	94	43	E00590M	D02212
DSW-1123F *	15	38	11	28	37	94	23	58	94	43	E00590M	D02213
DSW-1229	15.5	39	11.5	29	37	94	29	74	94	43	E00590M	D02215
DSW-1242	15.5	39	11.5	29	46	117	42	107	95	43	E00591M	D02532
DSW-1543	18.5	47	14 3/8	37	46	117	42.5	108	95	43	E00591M	D02550
DSW-1630	20	51	16	41	37	94	30	76	87	40	E00590M	D02536
DSW-1642	20	51	15 1/2	39	46	117	42	107	95	43	E00591M	D02535
DSW-1836	21	53	17	43	46	117	36	91	95	43	E00591M	D02511
DSW-1836C	21.5	55	17.5	44	37	94	44.5	113	95	43	E00590M	201339

SL-1100 Urethane Sealant - One Tube required per Sump (Packaged 12 tubes/case)

* Flush Mount model supplied without rain lip due to dispenser frame clearance limitations; Frame Gasket Included. Anchor bolts provided, Stabilizer Bar Kits ordered separately; One kit required for each emergency & vapor valve. Refer to FlexWorks Dispenser Sump Selection Chart (See Pages 19 - 20 of this catalog) to select sumps for particular dispensers.

Yellow indicates metal top model.

Dispenser Sumps

Section 5

FlexWorks Fiberglass Dispenser Sumps

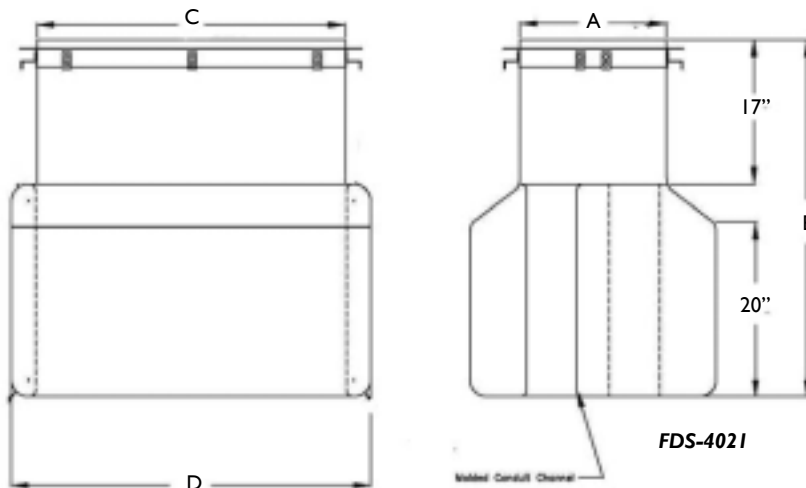
FlexWorks Fiberglass dispenser sumps allow the supply piping to enter and/or exit out of the sidewall of the containment sump at a very low elevation. Ideal for pressure piping systems requiring indirect slope back to the tank.

Features and Benefits

- **Structural Integrity** – Engineered with thick side walls to withstand backfill and high water table forces.
- **Full Access Working Area** frame is attached after plumbing is complete.



Model FDS-4021



FDS-4021

Fiberglass Dispenser Sumps Ordering Specifications

Model	A		B		C		D	
	in.	cm	in.	cm	in.	cm	in.	cm
FDS-4021	17	43	42	106	36	91	42	106
FDS-4319	15	38	30	76	39	99	39	99
FDS-4721	15	38	40	101	41	104	48	121

Refer to FlexWorks Dispenser Sump Selection Chart (See Pages 19 - 20 of this catalog) to select sumps for particular dispensers.

Important

IMPORTANT: OPW/FlexWorks by OPW Fueling Containment System products must be used in compliance with applicable federal, state, provincial, and local laws and regulations. Product selection should be based on physical specifications and limitations and compatibility with the environment and material to be handled. OPW/FLEXWORKS BY OPW FUELING CONTAINMENT SYSTEMS MAKES NO WARRANTY OF FITNESS FOR A PARTICULAR USE. All illustrations and specifications in this literature are based on the latest production information available at the time of publication. Prices, materials, and specifications are subject to change at any time, and models may be discontinued at any time in either case, without notice or obligation.

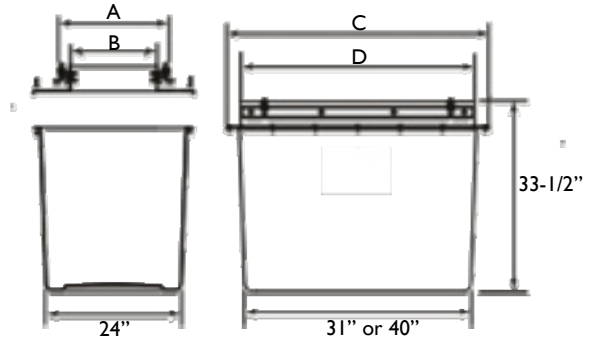
Section 5

Dispenser Sumps

Wide-Access Fiberglass Dispenser Sumps

Features and Benefits

- **Structural Integrity**- engineered with thick side walls to withstand backfill and high water table forces. Precise glass/resin metering throughout the molding process ensures material consistency and maximizes the strength-to-weight ratio.
- **Smooth Sealing Surfaces For Leak-Tight Sump Entry Fittings**- male/female mold halves produce a uniform wall thickness while eliminating air entrapment. The result is a flat, smooth finish, both inside and out, which provides leak-tight pipe entries.
- **Full-Perimeter Liquid Collection Channel** – Facilitates quick leak detection and allows flexibility in locating leak sensors.
- **Convenient Shipping and Storage** –Sump boxes are nestable. Two sizes accept multiple frames to accommodate all common dispensers.
- **Full-Access Working Area** – Frame is attached after plumbing is complete.
- **Mounting Flange** – Sump rests on island form crossbars for support during installation.



Wide Access Fiberglass Dispenser Sumps Ordering Specifications

Sump Model #	Dimensions								Weight with Top		Box Part No.	Top Assembly Part No.
	A		B		C		D		lbs.	kg		
	in.	cm	in.	cm	in.	cm	in.	cm				
DSF-1117F *	14.5	37	10.5	27	37	94	16.5	42	87	40	D02198M	D02209
DSF-1120	15	38	11	28	37	94	20	51	87	40	D02198M	D02210
DSF-1123	15	38	11	28	37	94	23	58	87	40	D02198M	D02212
DSF-1123F *	15	38	11	28	37	94	23	58	87	40	D02198M	D02213
DSF-1229	15.5	39	11.5	29	37	94	29	74	87	40	D02198M	D02215
DSF-1242	15.5	39	11.5	29	46	117	42	107	90	41	D02197M	D02532
DSF-1543	18.5	47	14 3/8	37	46	117	42.5	108	90	41	D02197M	D02550
DSF-1630	20	51	16	41	37	94	30	76	80	36	D02198M	D02536
DSF-1642	20	51	16	41	46	117	42	107	90	41	D02197M	D02535
DSF-1836	21.5	55	17.5	44	46.5	118	36.5	93	90	41	D02197M	D02511
DSF-1836C	21.5	55	17.5	44	37	94	44.5	113	87	40	D02198M	201339
DSFE-4612	FRP Dispenser Sump Extension (LG)											
DSFE-3712	FRP Dispenser Sump Extension (SM)											
SL-1100 Urethane Sealant - One Tube required per Sump (Packaged 12 tubes/case)												

* Flush Mount model supplied without rain lip due to dispenser frame clearance limitations; Frame Gasket Included.
Anchor bolts provided, Stabilizer Bar Kits ordered separately; One kit required for each emergency & vapor valve. Refer to FlexWorks Dispenser Sump Selection Chart (See Pages 19 - 20 of this catalog) to select sumps for particular dispensers.

Yellow indicates metal top model.

Dispenser Sump Selection Chart

Section 6

FlexWorks Dispenser Sump Selection Chart - Ordering Specifications

Dispenser Manufacturer & Model	Dispenser Footprint Dimensions		FlexWorks				
			One-Piece FlexWorks Polyethylene Sump	FlexWorks Wide-Access Polyethylene Sump	One-Piece FlexWorks Fiberglass Sump	FlexWorks Wide-Access Fiberglass Sump	Stabilizer Bar Kit
GILBARCO	in.	cm					
Commercial 625,650, 684 Series (21" / 53 cm Frame)	15-11/16"x21"	40 x 53	DS-1117F	DSW-1117F	----	DSF-1117F	SBK-1100J
Salesmaker-2 Series (21" / 53 cm Frame)	15-11/16"x21"	40 x 53	DS-1117F	DSW-1117F	----	DSF-1117F	SBK-1100J
Highline 11B Series (21" Frame / 53 mm)	15-11/16"x21"	40 x 53	DS-1117F	DSW-1117F	----	DSF-1117F	SBK-1100J
Highline 111B Series (27" / 69 cm Frame)	15-11/16"x27"	40 x 69	DS-1123F	DSW-1123F	----	DSF-1123F	SBK-1100J
Trimline 251, 252, 261, 262 (27" / 69 cm Frame)	15-11/16"x27"	40 x 69	DS-1123F	DSW-1123F	----	DSF-1123F	SBK-1100J
Trimline 154, 164, 251, 252, 261, 262 Series	15-11/16"x21"	40 x 53	DS-1117F	DSW-1117F	----	DSF-1117F	SBK-1100J
Commercial 650 Series (27" / 69 cm Frame)	15-11/16"x27"	40 x 69	DS-1123F	DSW-1123F	----	DSF-1123F	SBK-1100J
Highline Salesmaker Series	15-11/16"x21"	40 x 53	DS-1117F	DSW-1117F	----	DSF-1117F	SBK-1100J
Highline Salesmaker Series (27" / 69 cm Frame)	15-11/16"x27"	40 x 69	DS-1123F	DSW-1123F	----	DSF-1123F	SBK-1100J
Salesmaker-4 Series (27" / 69 cm Frame)	15-11/16"x27"	40 x 69	DS-1123F	DSW-1123F	----	DSF-1123F	SBK-1100J
Legacy Series	15-11/16"x27"	40 x 69	DS-1123F	DSW-1123F	----	DSF-1123F	SBK-1100J
Encore Series	23-1/2"x40-9/16"	60 x 103	DS-1836	DSW-1836	FDS-4021	DSF-1836	SBK-1800 *
Advantage (36" / 91 cm Frame Models)	21-1/2"x36"	55 x 91	DS-1630	DSW-1630	----	DSF-1630	SBK-1600
Quad or Dual Blender X + 0 (36" / 91 cm)							
Advantage (48" / 122 cm Frame Models)	21-1/2"x48"	55 x 122	DS-1642	DSW-1642	FDS-4721	DSF-1642	SBK-1600 *
MPD Single-Hose					FDS-4721		
MPD Three-Grade					FDS-4721		
MPD Four-Grade					FDS-4721		
Blender Six-Hose					----		
Blender Single-Hose					----		
Blender X + 0 (48" / 122 cm) or X + 1 (48" / 122 cm)					----		
MPD-1, MPD-2, MPD-3	16"x48"	41 x 122	DS-1036		----		SBK-1000J
MPD Fixed Blender	16"x48"	41 x 122	DS-1036		----		SBK-1000J
MPD Precision Blender	16"x48"	41 x 122	DS-1036		----		SBK-1000J
MPD Pro Blender	16"x48"	41 x 122	DS-1036		----		SBK-1000J

* For FDS-4021 and FDS-4721 Models, use Stabilizer Bar SBO-0300

Section 6

Dispenser Sump Selection Chart

FlexWorks Dispenser Sump Selection Chart - Ordering Specifications

Dispenser Manufacturer & Model	Dispenser Footprint Dimensions		One-Piece FlexWorks Polyethylene Sump	FlexWorks Wide-Access Polyethylene Sump	One-Piece FlexWorks Fiberglass Sump	FlexWorks Wide-Access Fiberglass Sump	Stabilizer Bar Kit
	in.	cm					
GASBOY							
0215A, 216A (197/8" Frame / 50.5 mm)	17-1/4"x19-7/8"	49 x 50.5	DS-1117F	DSW-1117F	----	DSF-1117F	SBK-1100J
52 and 53 Series	17-1/4"x19-7/8"	44 x 50.5	DS-1117F	DSW-1117F	----	DSF-1117F	SBK-1100J
8700, 8800, 9100, 9800 Series	17-1/4"x25"	44 x 63.5	DS-1120		----		SBK-1100J
(25" Frame 63.5 mm)	17-1/4"x25"	44 x 63.5		DSW-1320	----	DSF-1320	SBK-2000 *
8700, 8800, 9100, 9800 Series (28-1/4" Frame / 72 mm)	17-1/4"x28"	44 x 71	DS-1123	DSW-1123	----	DSF-1123	SBK-1100J
9850A	17-1/4"x25"	44 x 64	DS-1120	DSW-1120	----	DSF-1120	SBK-1100J
* Stabilizer bar is installed widthwise in dispenser sump.							
DRESSER / WAYNE							
350, 357, 358, 360, 370 Series	15"x25-7/8"	30 x 66	DS-1123F	DSW-1123F	----	DSF-1123F	SBK-1100J
Vista 380 Series (387, 389)	20"x35"	51 x 89	DS-1229	DSW-1229	----	DSF-1229	SBK-1200J
Vista 580 Series (580, 585)	20"x35"	51 x 89	DS-1229	DSW-1229	----	DSF-1229	SBK-1200J
Vista 390 Series (395, 399)	20"x48"	51 x 122	DS-1242	DSW-1242	----	DSF-1242	SBK-1200J
Vista 490 Series	20"x48"	51 x 122	DS-1242	DSW-1242	----	DSF-1242	SBK-1200J
Vista 590 Series	20"x48"	51 x 122	DS-1242	DSW-1242	----	DSF-1242	SBK-1200J
DL390, 395, 399 Series	20"x48"	51 x 122	DS-1242	DSW-1242	----	DSF-1242	SBK-1200J
HS1 Satellite / 287 Series	20"x35"	51 x 89	DS-1229	DSW-1229	----	DSF-1229	SBK-1200J
Ovation	19-1/2"x43-1/2"	50 x 110	DS-1543 / C	DSW-1543	FDS-4319	DSF-1543	SBK-1500 **
Select	19-3/8"x32-5/16"	49x82	DS-1630	DSW-1630	----	DSF-1630	SBK-1600
Global Century G2000, G2200	19-3/8"x32-5/16"	49x82	DS-1630	DSW-1630	----	DSF-1630	SBK-1600
Reliance	19-3/8"x32-5/16"	49x82	DS-1630	DSW-1630	----	DSF-1630	SBK-1600
HS3 / Vista	19-3/8"x32-5/16"	49x82	DS-1630	DSW-1630	----	DSF-1630	SBK-1600
TOKHEIM							
1200, 1248, 1250 Series	17-1/4"x25"	44 x 64	DS-1120	DSW-1120	----	DSF-1120	SBK-1100J
Premier 300 Series	22"x29"	56 x 73	DS-1825	DSW-1825	----	DSF-1825	SBK-1800
330B, 333B Series	17-1/4"x44"	44 x 112	DS-1642	DSW-1642	----	DSF-1642	SBK-1600

** For FDS-4319 Model, use Stabilizer Bar SBO-0250

Important

IMPORTANT: OPW/FlexWorks by OPW Fueling Containment System products must be used in compliance with applicable federal, state, provincial, and local laws and regulations. Product selection should be based on physical specifications and limitations and compatibility with the environment and material to be handled. OPW/FLEXWORKS BY OPW FUELING CONTAINMENT SYSTEMS MAKES NO WARRANTY OF FITNESS FOR A PARTICULAR USE. All illustrations and specifications in this literature are based on the latest production information available at the time of publication. Prices, materials, and specifications are subject to change at any time, and models may be discontinued at any time in either case, without notice or obligation.

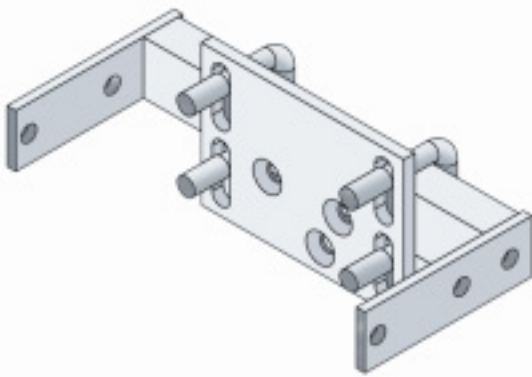
Dispenser Sump Accessories

Section 7

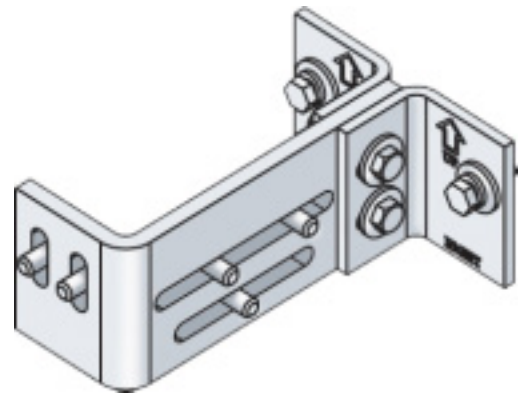
Dispenser Sump Accessories

Stabilizer Bar Kits

FlexWorks Stabilizer Bar Kits provide reliable support inside dispenser sumps/pans for boss-mounted emergency shear valves. One kit is required for each emergency valve and vapor shear valve.



"C-Bar"
(SBK-1600, SBK-1800)



"J-Bar"
(SBK-1000J, SBK-1200J)

Stabilizer Bar Kit Ordering Chart

Model	Application (for Sump) DS-, DSW, DSF, FDS	Weight	
		lbs.	kg
SBK-1100J	1117F, 1120, 1123, 1123F	5	2.3
SBK-1200J	1229, 1242, 1226F	6	2.7
SBK-1500	Ovation Product Line	7	3
SBK-1500V	Ovation Vapor Line	7	3
SBK-1600	1630, 1642	7	3
SBK-1800	1825, 1836, 1840	7	3
SBO-0250	Ovation FDS-4319	6	2.7
SBO-0300	Advantage / Encore, FDS-4721, FDS-4021	6	2.7
SBP-70S	Mounting Plate (70S Vertical Check Valve)	2	1
MPK-10 *	Extra Mounting Plate Kit	2	1

* Stabilizer bar is installed widthwise in dispenser sump. One valve mounting plate is included. Additional MPK-10 mounting plate kit is required for additional valves.

Important

IMPORTANT: OPW/FlexWorks by OPW Fueling Containment System products must be used in compliance with applicable federal, state, provincial, and local laws and regulations. Product selection should be based on physical specifications and limitations and compatibility with the environment and material to be handled. OPW/FLEXWORKS BY OPW FUELING CONTAINMENT SYSTEMS MAKES NO WARRANTY OF FITNESS FOR A PARTICULAR USE. All illustrations and specifications in this literature are based on the latest production information available at the time of publication. Prices, materials, and specifications are subject to change at any time, and models may be discontinued at any time in either case, without notice or obligation.

Section 8

Flexible Entry Boots

Flexible Entry Boots

FlexWorks Flexible Entry Boots are reliable, safe seals for pipe and conduit entries into underground containment sumps. These UL Listed entry boots allow for angled pipe entries and have no exposed metal parts to the underground environment. These entry boots are available in a variety of sizes and designs to accommodate rigid and flexible piping, ducting and Access Pipe.

Features and Benefits

- Watertight pipe and conduit entries
- Installation on flat or round surface
- Added flexibility permitting angled entries up to 15 degrees
- Boot repair kits available
- UL Listed



Sump Entry

Flexible entry boots have been tested to withstand a minimum of 6' of liquid head pressure. These seals provide a studded flange connection to create a positive and secure seal where the rubber contacts the sump wall and also around the pipe or conduit. Tightening down on a series of stud fasteners with a compression ring provides a high compression mechanical seal compared to screw on type bulkhead seals.

Angled Entries

Primary Pipe and access pipe entering the containment sumps may not be perpendicular with the sump wall. Angled entries are generally a result of directional plumbing restrictions on the inside of the containment chamber due to space limitations. Flexible entry boots are flexible enough to permit angled pipe or conduit entries (on two axes) into the sidewall of a containment chamber. All flexible entry boots permit angled entries up to a 15 degree angle off the perpendicular center line in any direction without leaking or putting undue stress on the pipe or conduit seal.



Single Flexible Entry Boot and Fitting Ordering Specifications

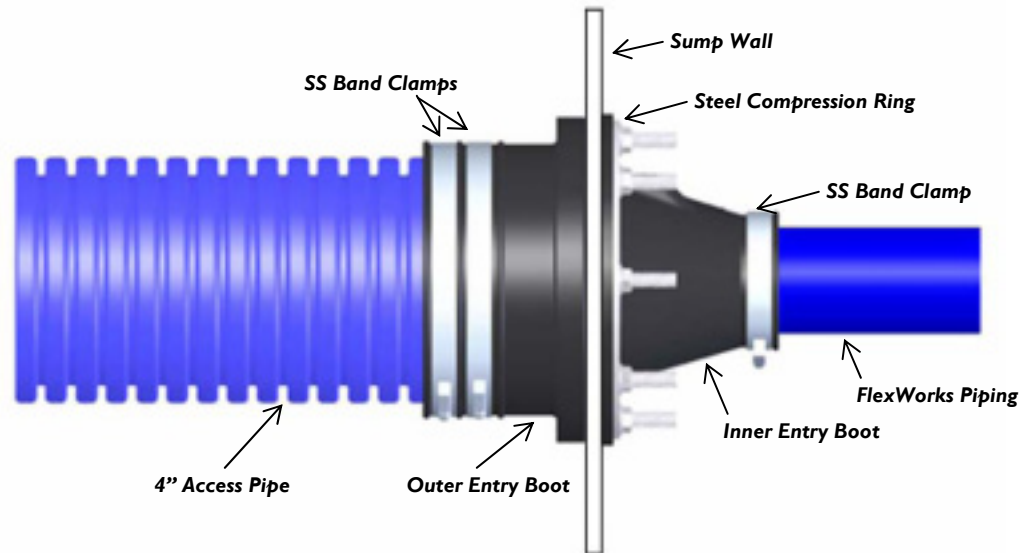
Model	Application
EBF-0751	1/2", 3/4" and 1" Conduit Entry Boot Fitting
EBF-0150	1.5" Entry Boot Fitting for 1.5" DW FlexWorks Pipe
EBF-0200	2" Entry Boot Fitting for 2" DW FlexWorks Pipe or 2" Rigid Pipe
EBF-0300	3" Entry Boot Fitting for 3" DW FlexWorks Pipe or 3" Rigid Pipe
EBF-0400	4" Entry Boot Fitting for 4" Rigid Pipe
EBF-0600	6" Entry Boot Fitting for 6" Rigid Pipe
SAB-7400	4" Sump Access Boot

Flexible Entry Boots

Section 8

Double Flexible Entry Boots

FlexWorks Double Flexible Entry Boots are designed to seal the sump penetration. These entry boots incorporate both internal and external band clamps to provide additional sealing in harsh environments. Boots firmly fasten and seal to the sump wall using steel studs, fasteners and a galvanized compression ring. These entry boots are available in a variety of sizes and designs to accommodate rigid and flexible piping, ducting and conduit.



Features and Benefits

- Watertight pipe and conduit entries
- Installation on flat or round surface
- Added flexibility permitting angled entries up to 15 degrees
- Boot repair kits available
- UL Listed
- Provides clean dry environment
- Accommodates various site installations
- Allows for easy field adjustments
- Can be repaired if damaged
- Third party tested and approved
- Internal and external clamps for positive seal off

Double Flexible Entry Boot and Fitting Ordering Specifications

Model	Application
DEB-0751	1/2", 3/4" and 1" Conduit Double Entry Boot Fitting
DEB-0150	1.5" Double Entry Boot Fitting for 1.5" DW FlexWorks Pipe
DEB-0200	2" Double Entry Boot Fitting for 2" DW FlexWorks Pipe or 2" Rigid Pipe
DEB-0200X	2" LCX Double Entry Boot Fitting for 2" Ameron LCX / MCX Pipe
DEB-0300	3" Double Entry Boot Fitting for 3" DE FlexWorks or 3" Rigid Pipe
DEB-0300X	3" LCX Double Entry Boot Fitting for 3" Ameron LCS / MCX Pipe
DEB-0400	4" Double Entry Boot Fitting for 4" Rigid Pipe
DEB-4015	4" to 1.5" Double Entry Boot Fitting for 4" FlexWorks Access Pipe to 1.5" DW FlexWorks Pipe
DEB-4020	4" to 2" Double Entry Boot Fitting for 4" FlexWorks Access Pipe to 2" DW FlexWorks Pipe

Section 9

Test Boots and Test Equipment

Test Boots

FlexWorks Test Boots are used to isolate and air-test the interstitial space between the primary and secondary pipe. One test boot is required for each pipe end.



Models TBA-3015,
TBA-4015 and TBA-4020

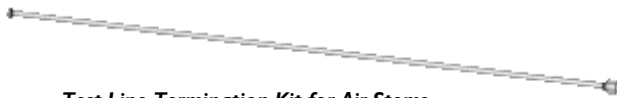


Models TBA-0075,
TBA-0100, TBA-0150,
TBA-0200 and TBA-0300

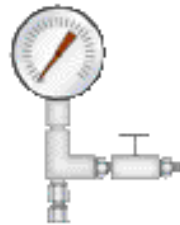
Testing Equipment



Test Jumper for Air Stems
(TJ-200A)



Test Line Termination Kit for Air Stems
(TLT-36A)



Test Gauge Assembly
(TGA-15)



Coax Test Tube
(CTT-3836)

Test Boot and Testing Equipment Ordering Specifications

Model	Application
TBA-0075	3/4" Test Boot with Air Stem
TBA-0100	1" Test Boot with Air Stem
TBA-0150	1.5" Test Boot with Air Stem
TBA-0200	2" Test Boot with Air Stem
TBA-0300	3" Test Boot with Air Stem
TBA-3015	3" to 1.5" Test Boot with Air Stem
TBA-3020	3" to 2" FRP Test Boot with Air Stem
TBA-4015	4" to 1.5" Test Boot with Air Stem
TBA-4020	4" to 2" Test Boot with Air Stem
TBA-4030	4" to 3" FRP Test Boot with Air Stem
TJ-200A	Test Jumper for air stems
TLT-36A	Test line termination kit for air stems
TGA-0015	Test quage assembly
CTT-3836	Test Tube, Coax (for use with coaxial fittings)

Important

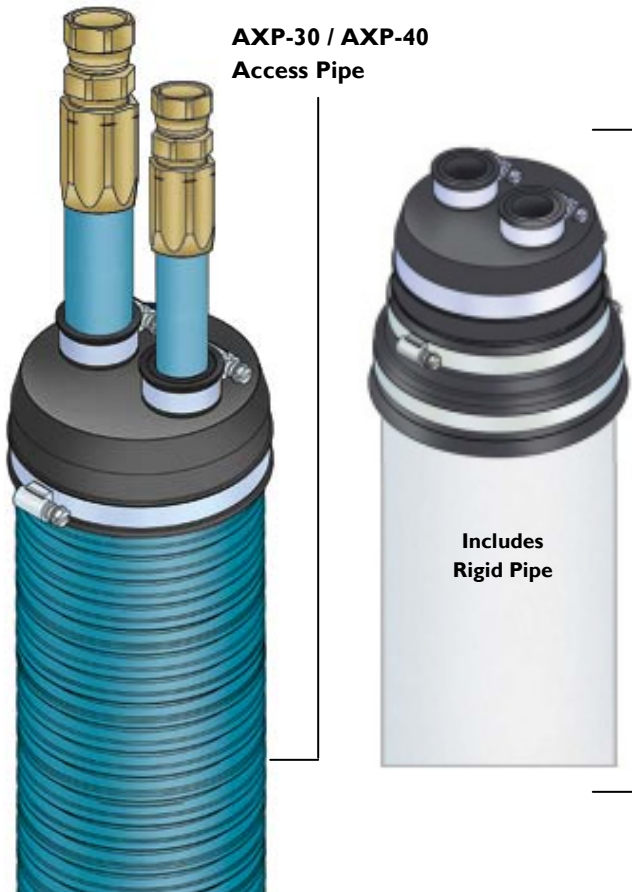
IMPORTANT: OPW/FlexWorks by OPW Fueling Containment System products must be used in compliance with applicable federal, state, provincial, and local laws and regulations. Product selection should be based on physical specifications and limitations and compatibility with the environment and material to be handled. OPW/FLEXWORKS BY OPW FUELING CONTAINMENT SYSTEMS MAKES NO WARRANTY OF FITNESS FOR A PARTICULAR USE. All illustrations and specifications in this literature are based on the latest production information available at the time of publication. Prices, materials, and specifications are subject to change at any time, and models may be discontinued at any time in either case, without notice or obligation.

Specialty Fittings

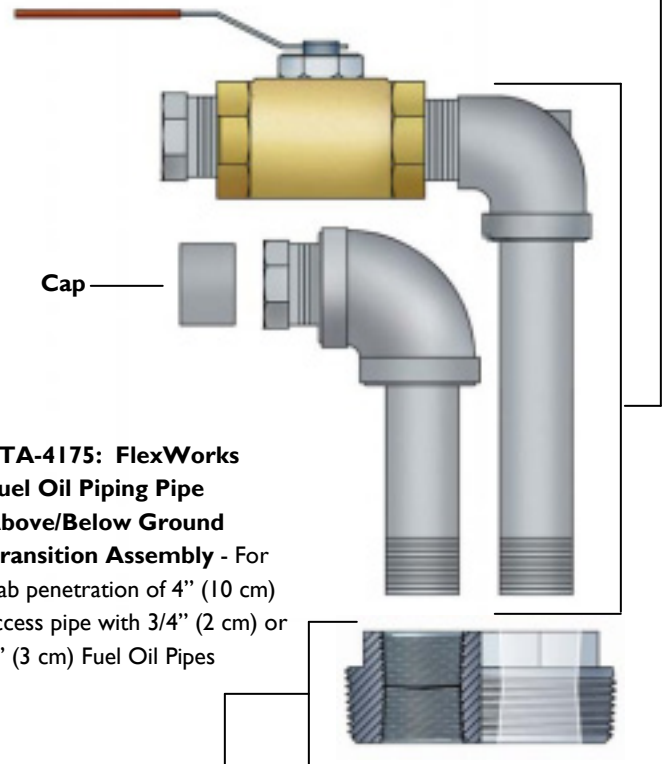
Section 10

Specialty Fittings—3/4” and 1”

TBP-100: Plug for the Port on TBA-4175 Series Test Boots: For use when running only one fuel line inside AXP Pipes.



PJK-4175: FlexWorks Fuel Oil Piping Pipe Joint Kit - includes nipples, ball valve and fittings used to connect 3/4” (2cm) or 1” (3 cm) FOPs to PDT-411 Tank Bung Fitting



PTA-4175: FlexWorks Fuel Oil Piping Pipe Above/Below Ground Transition Assembly - For slab penetration of 4” (10 cm) access pipe with 3/4” (2 cm) or 1” (3 cm) Fuel Oil Pipes

PDT-411: FlexWorks Double-Tapped Tank Bung Fitting, 4” (10 cm) MNPT w/ Dual 1” (3 cm) FNPT Taps - Used in 4” (10 cm) Tank Bung to accommodate FOP Supply and Return Lines

Specialty Fitting Ordering Specifications

Model	Application
PDT-411	4" x 1" x 1" Double Tap Bushing
PJK-4175	4" x 1" x 3/4" Pipe Joining Kit
PTA-4175	Transition Assembly
TBA-4175	4" Fuel Oil Boot Transition Assembly

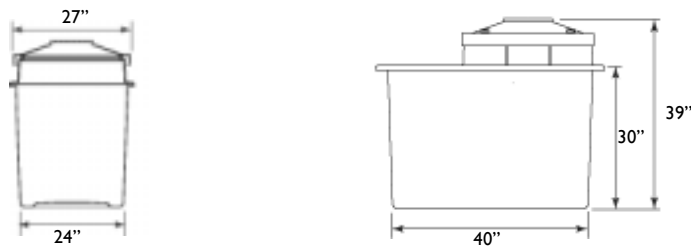
Section II Transition and Special Application Sumps

Transition Sumps

FlexWorks Above-Grade / Below-Grade Transition Sumps

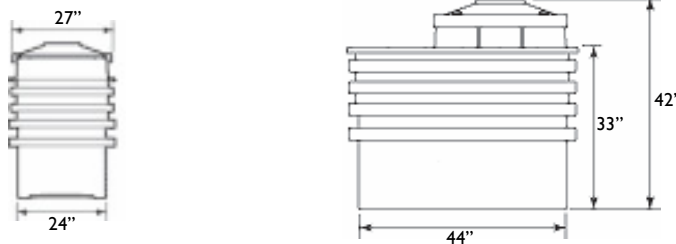
Model PSTF-4630 Transition Sump **(Fiberglass Sump/Fiberglass Top)**

- Large, injection-molded FRP containment chambers are stackable for convenient shipping and storage
- Removable FRP top allows maximum access during installation of fittings and equipment, and provides a rigid entry fitting area adjacent to the cover for vertical entry of above-grade piping.
- The PSTF-4630 is not adjustable, but FRP Sump Height Extenders (DFSE-4612) are available for the PSTF-4630 to accommodate deeper bury applications.



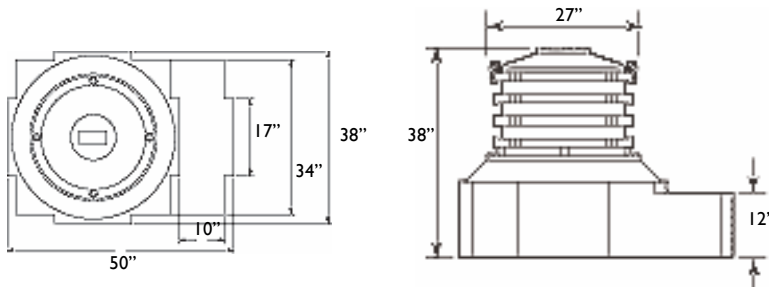
Model PST-4630 Transition Sump **(Polyethylene Sump/Fiberglass Top)**

- Large, heavily ribbed polyethylene containment chamber provides structural rigidity.
- Adjustable to a minimum of 26"



Model PST-5030 One Piece Polyethylene **Transition Sump**

- Flat entry fitting area extending from the sump base accommodates vertical pipe entries.
- Heavily ribbed riser provides strength and rigidity.
- Adjustable to a minimum of 29".



Transition and Special Application Sumps

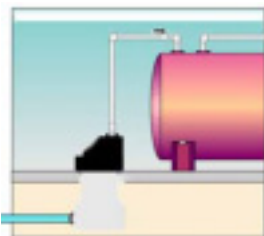
Section I I

Transition Sumps

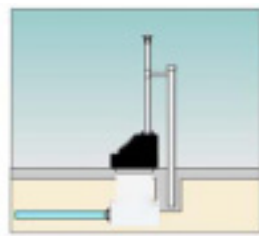
Model PTS-4021 Transition Sump
(2 Piece - Polyethylene Sump/Polyethylene Top)

- Non-corroding, polyethylene sump container
- Weatherproof lockable cover
- Exterior anchoring system

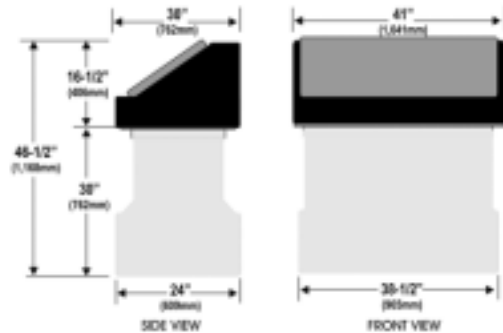
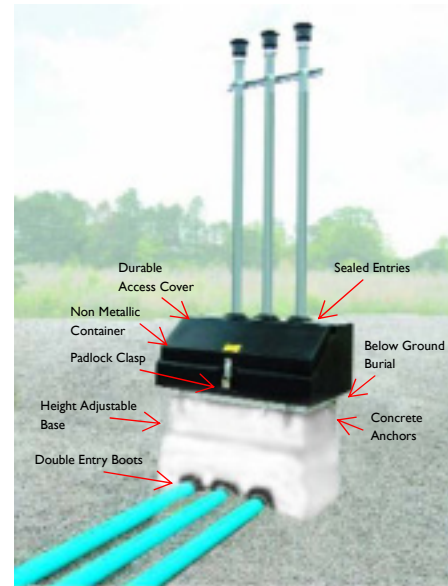
AST Application: Provides secondary containment and accessibility to the fittings that connect the underground supply piping to the rigid supply piping that leads from an above ground storage tank. **Vent Stack Application:** Transition sump is used for containment and accessibility to the fittings. At the vent stack, where the underground vent piping connects to the rigid vent stack piping.



AST Application

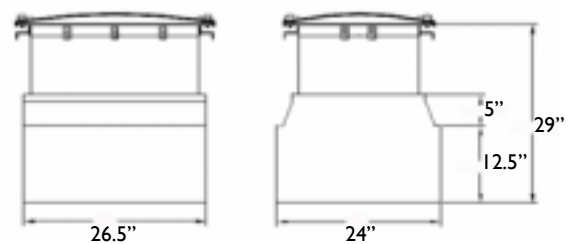


Vent Stack Application



Model PTS-2922 Transition Sump
(2 Piece - Polyethylene Sump/Polyethylene Top)

- Non-corroding, polyethylene sump container



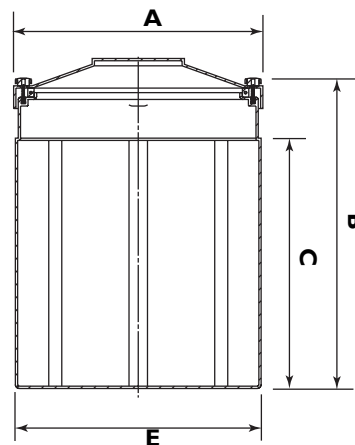
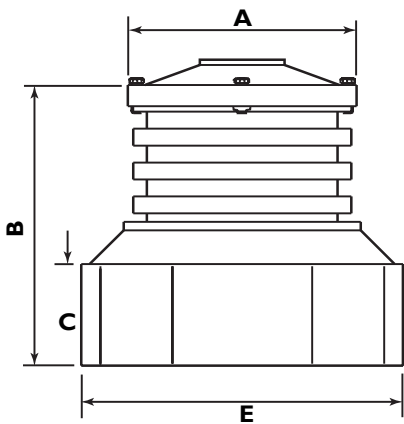
Transition Sump Ordering Specifications

Model #	Application	Height		Weight	
		in	cm	lbs	kg
PSTF-4630	Fiberglass Transition Sump with Fiberglass Top	39	99	90	41
PST-4630	Poly Transition Sump with Fiberglass Top	42	107	100	45
PST-5030	One Piece Poly Transition Sump with Poly Top, 38"x50"	38	97	100	45
PTS-2922	One Piece Poly Transition Sump with Poly Top, 29"x22"	29	74	54	24
PTS-4021	Two Piece Poly Transition Sump with Poly Top	46.5	118	110	49

Section II Transition and Special Application Sumps

Special Application Sumps and Extensions

FlexWorks Special Application Sumps are installed below-grade and provide a convenient means of housing a multitude of underground piping connections and equipment, including valves, filters, meters and pumps. The PSL-3830 Line Connection Sump has large horizontal flats to accommodate multiple piping entries. The PSL-3630 Tall Mini-Sump has long vertical flats to accommodate applications with varying pipe entry heights, including the VacuRite® Out-of-Tank Check/Drain Valve.



Special Application Sump and Extensions Ordering Specifications

Part #	Application	Manway Diameter		Dimensions						Pan els		E Base		Burial Depth			
				A Cover		B Height		Dimensions CXE						max.		min.	
		in	mm	in	mm	in	mm	in	mm	#	in	mm	in	mm	in	mm	
PSL-3830	In-Line Sump, 38"x30"	30	762	27	686	36	914	12"x38"	305x965	12	38	965	41	1041	29	737	
PSL-3630	Special Application Sump, 36"x30"	30	762	27	686	36	914	28"x20"	711x254	8	26	660	48	1219	40	1016	

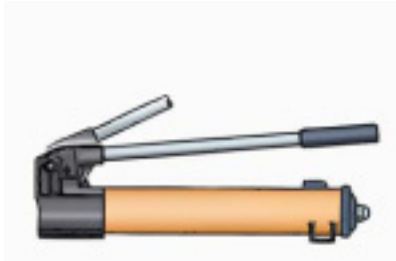
Installation Tools

Section 12

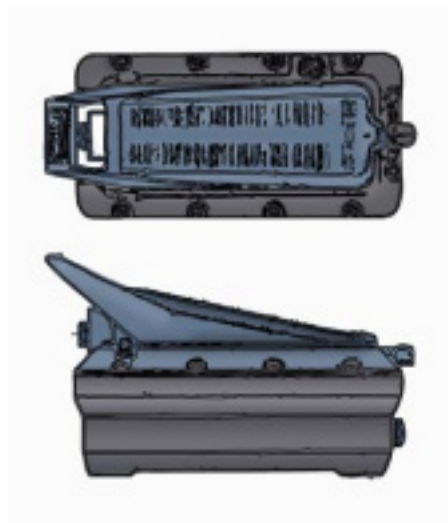
Installation Tools

Coupling Machines

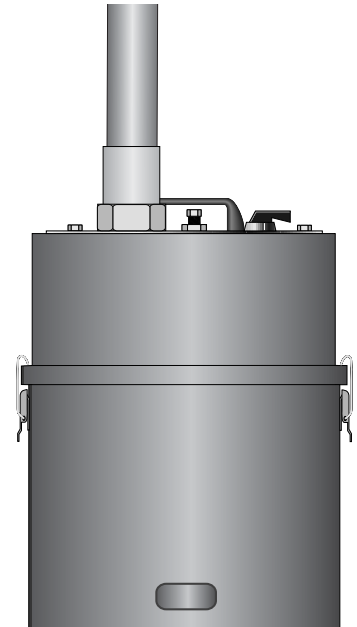
The OPW Fueling Containment Systems Coupling Machine is required for the installation of both coax and swivel pipe couplings. The Coupling Machine is designed to internally expand the metal pipe insert installed at the end of a flexible pipe section. Coupling machines are available in both 110 and 220 volt models. Coupling swage kits are available to couple both coax and swivel couplings for a variety of pipe sizes.



**Manually Operated Coupling Machine
(CMM-200)**



**Pneumatic Coupling Machine
(CMP-200)**



**Electronic Coupling Machine
220 Volt: (CME-0220)
110 Volt: (CME-0110)
110 Volt, Remote (CME-0110R)**

Coupling Machine Ordering Specifications

Model	Application
CME-0110R	Coupling Machine, 110 Volt, Remote
CME-0110	Coupling Machine, 110 Volt
CME-0220	Coupling Machine, 220 Volt
CMM-200	Coupling Machine, Manual
CMP-200	Coupling Machine, Pneumatic

Important

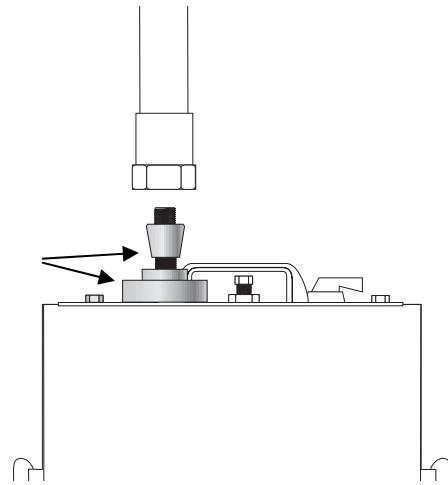
IMPORTANT: OPW/FlexWorks by OPW Fueling Containment System products must be used in compliance with applicable federal, state, provincial, and local laws and regulations. Product selection should be based on physical specifications and limitations and compatibility with the environment and material to be handled. OPW/FLEXWORKS BY OPW FUELING CONTAINMENT SYSTEMS MAKES NO WARRANTY OF FITNESS FOR A PARTICULAR USE. All illustrations and specifications in this literature are based on the latest production information available at the time of publication. Prices, materials, and specifications are subject to change at any time, and models may be discontinued at any time in either case, without notice or obligation.

Section 12

Installation Tools

Swage Kits

Swages are used with the OPW Fueling Containment System Coupling Machine to internally expand the coupling onto the end of the flexible pipe section. There are a variety of coupling swage kits available to accommodate a variety of coupling types and sizes. **NOTE:** 3/4" and 1" swage kits adapt to the 1-1/2" swivel faceplate that comes standard with each coupling machine.



Swage Kit Ordering Specifications

Model	Application
CSK-0075S	3/4" Swivel Coupling Swage Kit
CSK-0100S	1" Swivel Coupling Swage Kit
CSK-0150S	1.5" Swivel Coupling Swage Kit
CSK-0150C	1.5" Coax Coupling Swage Kit
CSK-0200S	2" Swivel Coupling Swage Kit
CSK-0200C	2" Coax Coupling Swage Kit
CSK-0300S	3" Swivel Coupling Swage Kit

Pipe Cutters and Jacket Strippers

The FlexWorks pipe cutter is designed to produce a clean and even pipe cut which is necessary for proper coupling attachment. The FlexWorks Jacket Stripper is a tool used to remove a section of the secondary outer jacket of the FlexWorks Double Wall piping. This is required for installation of swivel pipe couplings. **NOTE:** When using coax pipe couplings, do not trim piping secondary.



Pipe Cutter
(PCT-1000)



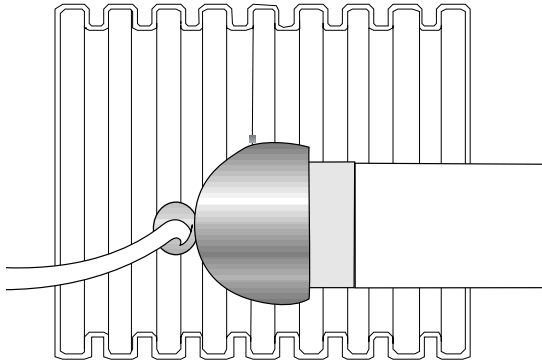
Model	Application
SPC-300	3" Access Pipe Cutter
SPC-400	4" Access Pipe Cutter
PCT-1000	Pipe Cutter
PCB-2000	Pipe Cutter Blade
JCT-0075	3/4" Jacket Cutter
JCT-0100	1" Jacket Cutter
JCT-0150	1.5" Jacket Cutter
JCT-0200	2" Jacket Cutter
JCT-0300	3" Jacket Cutter
ICB-1000	Jacket Cutter Blades

Installation Tools

Section 12

Fishing Bull Nose

An attachment for the end of a flexible pipe section, used to aid in fishing the flexible pipe section through the Access Pipe. There are a variety of bullnoses available to connect to swivel couplings. **NOTE:** 3/4" and 1" fishing bullnose are female threaded to accommodate 3/4" or 1" couplings.



Model	Application
FBN-2075	3/4" Fishing Bull Nose
FBN-2100	1" Fishing Bull Nose
FBN-1150	1.5" Fishing Bull Nose, Coax
FBN-2150	1.5" Fishing Bull Nose
FBN-2200	2" Fishing Bull Nose
FBN-3200	3" Fishing Bull Nose

Urethane Sealant

An all-purpose sealant. Can be used as an entry fitting sealant as well as to bond dispenser tops.

Model	Application
SL-1100	Urethane Sealant (10.3 oz. Cartridge)

Important

IMPORTANT: OPW/FlexWorks by OPW Fueling Containment System products must be used in compliance with applicable federal, state, provincial, and local laws and regulations. Product selection should be based on physical specifications and limitations and compatibility with the environment and material to be handled. OPW/FLEXWORKS BY OPW FUELING CONTAINMENT SYSTEMS MAKES NO WARRANTY OF FITNESS FOR A PARTICULAR USE. All illustrations and specifications in this literature are based on the latest production information available at the time of publication. Prices, materials, and specifications are subject to change at any time, and models may be discontinued at any time in either case, without notice or obligation.

Section 13

Fire Suppression

FlexWorks Automatic Fire Extinguisher System

The FlexWorks Automatic Fire Extinguisher System is a small, non-rechargeable fire extinguisher designed specifically to be installed in a containment sump underneath an above-ground fuel dispenser, and to automatically extinguish a fuel fire in the event of a dispenser knock-over. The FlexWorks Fire Extinguisher System will automatically activate and discharge its extinguishing agent when the surrounding temperature reaches 155°F (68°C). The Fire Extinguisher comes with its own mounting bracket and can be mounted to a variety of surfaces. The Fire Extinguisher contains enough extinguishing agent to protect dispenser containment sumps up to a maximum capacity of 30 cubic feet.

Features and Benefits

- **Automatically Extinguishes Fires and Prevents Re-ignition**—Aqueous Film Forming Foam (AFFF) quickly extinguishes hydrocarbon fires and creates a residual foam film barrier to prevent re-ignition of fuel vapors.
- **Environmentally Friendly Suppressant Agent**—AFFF is biodegradable, has a very low level of toxicity, is non-corrosive and has no ozone-depleting effect.
- **Easy Installation in New and Retrofit Applications**—The FlexWorks Automatic Fire Extinguisher is attached to the side strut inside new or existing dispenser sumps with the supplied bracket.
- **Maintenance Free**—Regular checks of the pressure gauge are all that is necessary to ensure proper operating condition. Annual testing is not required, as the FlexWorks Fire Extinguisher is factory charged and cannot be partially discharged, recharged or reused.
- **Protects Low Melting Point Material (FRP and Thermoplastic) Piping**—In accordance with the newly proposed NFPA 30A, 2000 Edition.



Application	Dispenser Containment Sump
Agent	Aqueous Film Forming Foam for Class B Hydrocarbon Fires
Coverage Area:	30 Cu. Ft.
Propellant:	Nitrogen
Activation Temp:	155 F (68 C)
Operating Temp Range:	-20 to 155 F (-29 C to 68 C)

Automatic Fire Extinguisher System Ordering Specifications

Model	Dimensions
FSS-30	FlexWorks Automatic Fire Extinguisher System



OPW FUELING CONTAINMENT SYSTEMS STANDARD PRODUCT WARRANTIES

NOTICE: OPW Fueling Containment Systems, Inc. (OPW-FCS) products must be used in compliance with all applicable federal, state, provincial and local laws, rules and regulations. Product selection must be based on physical specifications and limitations, compatibility with the environment and material to be handled. All illustrations and specifications in this literature are based on the latest production information available at the time of publication. Prices, materials and specifications are subject to change at any time, and models may be discontinued at any time, in either case, without notice or obligation.

OPW-FCS warrants solely to its customer that the following products sold by OPW-FCS will be free from defects in materials and workmanship under normal use and conditions for the periods indicated:

Product	Warranty Period
FlexWorks Primary Pipe	10 years from date of manufacture
All Products Certified to California 2001 Standards*	1 year from date of manufacture or from date of installation registration (not to exceed 15 months from date of manufacture)
All other products	1 year from date of manufacture
Products certified to California 2001 Standards will have an OPW Fueling Containment Systems registration card enclosed / attached to the product.	

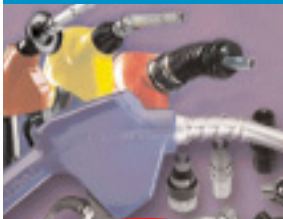
OPW-FCS's exclusive obligation under this limited warranty is, at its option, to repair, replace or issue credit (in an amount not to exceed the list price for any defective product) for future orders for any product that may prove defective within the applicable warranty period (repairs or replacements are subject to prorated warranty coverage for remainder of the original warranty period). Complete and proper warranty claim documentation and proof of purchase required. All warranty claims must be made in writing and delivered during the applicable warranty period to OPW-FCS at 3250 US Highway 70 Business West, Smithfield, North Carolina, 27577, Attention: Lisa Lovering. No products may be returned to OPW-FCS without its prior written authority.

This limited warranty shall not apply to any FlexWorks or other OPW-FCS product unless it is installed by an OPW-FCS attested installer. This limited warranty also shall not apply to any FlexWorks or other OPW-FCS product: unless all required site and warranty registration forms are completed and received by OPW-FCS within 60 days of installation; unless all piping connections are installed with a nationally-recognized or state-approved leak detection device in each tank and dispenser sump (which are not for storage and from which all discharge hydrocarbons must be removed, and the systems completely cleaned, within 24 hours); unless testable sumps utilize OPW-FCS pipe and access fittings; unless a sump inspection log or an EPA recommended/required checklist is maintained and the results are furnished to OPW-FCS upon request; and unless OPW-FCS is notified within 24 hours of any known or suspected product failure and is provided with unrestricted access to the product and the site. This limited warranty also shall not apply to any product which has been altered in any way, which has been repaired by anyone other than a service representative authorized by OPW-FCS, or when failure or defect is due to: improper installation or maintenance (including, without limitation, failure to follow FlexWorks Manual Installation Guide and all product warning labels); abuse or misuse; violation of health or safety requirements; use of another manufacturer's, or otherwise unauthorized, substances or components; soil or other surface or subsurface conditions; or fire, flood, storm, lightning, earthquake, accident or any other conditions, events or circumstances beyond OPW-FCS's control.

THIS LIMITED WARRANTY IS IN LIEU OF ALL OTHER WARRANTIES, EXPRESS OR IMPLIED, AND ALL OTHER WARRANTIES INCLUDING, WITHOUT LIMITATION, THE WARRANTIES OF MERCHANTABILITY AND FITNESS FOR A PARTICULAR PURPOSE, ARE HEREBY EXCLUDED. OPW-FCS shall have no other liability whatsoever, whether based on breach of contract, negligence, gross negligence, strict liability or any other claim, including, without limitation, for special, incidental, consequential or exemplary damages or for the cost of labor, freight, excavation, clean-up, downtime, removal, reinstallation, loss of profit, or any other cost or charges. No person or entity is authorized to assume on behalf of OPW-FCS any liability beyond this limited warranty. This limited warranty is not assignable.

OPW

ONE COMPANY



OPW
DISPENSING PRODUCTS



OPW
ENVIRONMENTAL SYSTEMS



OPW
FUEL MANAGEMENT SYSTEMS



OPW
CLEANENERGY FUELING PRODUCTS



OPW
FUELING CONTAINMENT SYSTEMS

OPW Dispensing Products designs and manufactures a wide array of conventional, vacuum-assist, balance vapor recovery and manual dispensing nozzles, breakaways, hose swivels, and swivel breakaways. It also offers vapor recovery systems, vapor recovery test equipment and Vapor-saver™, the innovative membrane technology tank pressure management/hydrocarbon recovery system.

OPW Environmental Systems designs and manufactures underground storage tank equipment, suction system and above ground storage tank equipment. Product lines include: spill containers, manholes, extractor fittings, overfill prevention valves, emergency shut-off valves, caps and adaptors.

OPW Fuel Management Systems designs and manufactures automated fuel control systems and tank gauges. Its products include card, key, radio frequency- and code-activated automated fuel control systems, remote management, PC software, and tank level monitors; tank, sump and monitoring well gauges, and sensors and systems for liquid level monitoring and leak detection.

OPW CleanEnergy™ Fueling Products designs and manufactures the industry's most complete line of CNG (compressed natural gas), Hydrogen and LPG (liquefied petroleum gas) fueling nozzles, breakaways, and receptacles. Its products include NGV1 profile nozzles (Type 1, 2 and 3) and receptacles and Brevetti Nettuno brand LPG nozzles and accessories.

OPW Fueling Containment Systems designs and manufactures FlexWorks, OPW's product line of flexible piping and containment systems, tank and dispenser sumps, flexible primary and access piping and tank venting equipment.



ISO 9001:
2000 Registered
Company
Reference #A12174



National
Association
of Truck Stop
Operators

PEI Manufacturer of the Year

NFPA
(National Fire Protection Agency)

NATIONAL COUNCIL OF
WEIGHTS AND MEASURES

National Association
of Convenience Stores



FlexWORKS

BY OPW FUELING CONTAINMENT SYSTEMS



© Copyright 2007 OPW-FCS Designs and specifications are subject to change without notice.

OPW
FUELING CONTAINMENT SYSTEMS

3250 US Highway 70 Business West * Smithfield, NC 27577
Customer Service: (800) 422-2525 * Fax: (800) 421-3297
www.opwfcs.com

Publication: FPC-0001
Issue Date: 11/01/07

IMPORTANT: OPW/FlexWorks by OPW Fueling Containment System products must be used in compliance with applicable federal, state, provincial, and local laws and regulations. Product selection should be based on physical specifications and limitations and compatibility with the environment and material to be handled. OPW/FLEXWORKS BY OPW FUELING CONTAINMENT SYSTEMS MAKES NO WARRANTY OF FITNESS FOR A PARTICULAR USE. All illustrations and specifications in this literature are based on the latest production information available at the time of publication. Prices, materials, and specifications are subject to change at any time, and models may be discontinued at any time in either case, without notice or obligation.